

Healthcare use by people who use illicit opioids (HUPIO): development of a cohort based on electronic primary care records in England

Extended Data

1	Search terms used to identify codes that may represent a history of illicit opioid use.....	2
2	Codelist for identifying people with a history of illicit opioid use	3
3	Age- and sex-distribution of patients by product and clinical codes	16
4	Detailed table of mortality rates and ratios.....	17
5	Number of patients currently in the cohort	18
6	Age of patients at cohort entry	19
7	Internal validation based on hospital admissions for opioid dependence	21

1 Search terms used to identify codes that may represent a history of illicit opioid use

We used the following search terms to identify codes in Read (for Gold) and SNOMED (for AURUM) that may indicate a history of illicit opioid use.

Population	Dictionary	Search category	Search term (anywhere in string)
Patients prescribed methadone	Product	Drug substance name	methadone
		Product name	amidone, dolophine, eptadone, heptadon, metado, methadone, methadose, methex, methodex, physeptone, pinadone, symoron
Patients prescribed buprenorphine	Product	Drug substance name	buprenorphine
		Product name	bunavail, buplast, bupramyl, buprenorphine, busiete, butec, butrans, cizdol, espranor, gabup, hapoctasin, natzon, panitaz, prefibin, prenatal, probuphine, reletrans, relevtec, sevodyne, sublocade, suboxone, subutex, temgesic, trephine, transtec, turgeon, zubsolv
People who use illicit opioids or misuse prescribed opioids	Medical	Read Term / SNOMED Term	abus, addict, buprenorphine, dependen, drug user, heroin, inject, methadone, misus, opiate, opiate substitution, opioid, overdose

2 Codelist for identifying people with a history of illicit opioid use

Column descriptions:

1. Database: A = CPRD AURUM; G = CPRD GOLD
2. Medcode: The internal CPRD code
3. ReadCode / SNOMED: For Aurum, SNOMED CT Concept ID's are provided; for GOLD; Read Codes are provided. Codes have the prefix 'x' to prevent these codes from being read as numeric values by software packages (which can lead to them changing).
4. Type: Pr = prodcode (prescription); Me = Medcode (clinical code)
5. Term: Description of code
6. Meth / bupe: m = methadone; b = buprenorphine
7. Status: Def = definite history of illicit opioid use; Prob = probable history of illicit opioid use; Ex = excluded from phenotype.
8. Number in database: unique patients in full database with the code recorded at any time.
9. Number in cohort: unique patients in the cohort of patients with a history of illicit opioid use with the code recorded at any time
10. Dropped: unique patients with the code that are not included in the cohort of patients with a history of illicit opioid use
11. % dropped: % of patients with the code that are not included in the cohort of patients with a history of illicit opioid use (i.e. the % that do not have another code included in the phenotype). Some percentages are rounded to the nearest 10% to avoid disclosure of small cell counts.
12. Median age: median age of all unique patients with the code (base = 'number in database'), at age when code was first recorded
13. % Male: % of unique patients with the code (base = 'number in database') that are male

Data-base	Medcode	ReadCode / SNOMED	Type	Term	Meth / bupe	Status	Number in database	Number in cohort	Dropped	% dropped	Median age (IQR)	% Male
A	x2052541000033112	-	Pr	Methadone Hydrochloride Diluent Oral Solution Sugar Free	m	Def	95	90-100	0-10	0%	36.0 (32.1-44.6)	67%
A	x167441000033112	-	Pr	Buprenorphine Injection 300 micrograms	b	Ex	<50	<50	<50	90%	54.4	33%
A	x885741000033117	-	Pr	Methadone Hydrochloride Injection 10mg/ml	m	Ex	139	110-120	20-30	20%	33.4 (29.2-42.3)	69%
A	x1419141000033111	-	Pr	Temgesic Injection 300 micrograms	b	Ex	-	-	-	-	-	-
A	x2128441000033117	-	Pr	Methex Oral solution 1 mg/ml	m	Ex	-	-	-	-	-	-
A	x1073941000033113	-	Pr	Physeptone Injection 10mg/ml	m	Ex	<50	<50	<50	10%	30.6	75%
A	x1075041000033111	-	Pr	Physeptone Linctus 2 mg/5 ml	m	Ex	<50	<50	<50	70%	72.2	40%
A	x2267741000033115	-	Pr	Methadone Hydrochloride Oral Solution, Sugar Free, Tartrazine Free 1 mg/1 ml	m	Def	1069	1050-1060	10-20	0%	34.8 (28.9-42.4)	69%
A	x6527441000033112	-	Pr	Prefibin 0.4mg sublingual tablets (Sandoz Ltd)	b	Ex	-	-	-	-	-	-
A	x6527741000033117	-	Pr	Tephine 400microgram sublingual tablets (Sandoz Ltd)	b	Ex	<50	<50	<50	0%	39.6	100%
A	x10045741000033116	-	Pr	Gabup 0.4mg sublingual tablets (Martindale Pharmaceuticals Ltd)	b	Ex	-	-	-	-	-	-
A	x174241000033111	-	Pr	Buprenorphine 400microgram sublingual tablets sugar free	b	Def	8104	6855	1249	15%	44.2 (35.1-57.0)	58%
A	x1428641000033115	-	Pr	Temgesic 400microgram sublingual tablets (Indivior UK Ltd)	b	Ex	1737	298	1439	83%	53.6 (42.4-65.5)	47%
A	x1835541000033116	-	Pr	Subutex 0.4mg sublingual tablets (Indivior UK Ltd)	b	Def	1755	1720-1730	30-40	0%	35.0 (29.3-40.8)	74%
A	x10045841000033114	-	Pr	Gabup 2mg sublingual tablets (Martindale Pharmaceuticals Ltd)	b	Ex	-	-	-	-	-	-
A	x6527141000033116	-	Pr	Prefibin 2mg sublingual tablets (Sandoz Ltd)	b	Ex	<50	<50	<50	0%	44.6	0%
A	x1835641000033115	-	Pr	Subutex 2mg sublingual tablets (Indivior UK Ltd)	b	Def	4714	4654	60	1%	33.4 (27.9-40.0)	75%
A	x1835341000033111	-	Pr	Buprenorphine 2mg sublingual tablets sugar free	b	Def	9951	9659	292	3%	36.9 (30.6-44.1)	73%

Data-base	Medcode	ReadCode / SNOMED	Type	Term	Meth / bupe	Status	Number in database	Number in cohort	Dropped	% dropped	Median age (IQR)	% Male
A	x6527241000033111	-	Pr	Prefibin 8mg sublingual tablets (Sandoz Ltd)	b	Ex	<50	<50	<50	0%	32.3	100%
A	x10046141000033110	-	Pr	Gabup 8mg sublingual tablets (Martindale Pharmaceuticals Ltd)	b	Ex	-	-	-	-	-	-
A	x1835441000033117	-	Pr	Buprenorphine 8mg sublingual tablets sugar free	b	Def	7824	7771	53	1%	36.7 (30.8-43.0)	77%
A	x1835741000033112	-	Pr	Subutex 8mg sublingual tablets (Indivior UK Ltd)	b	Def	3653	3620-3630	20-30	0%	33.9 (28.5-40.0)	77%
A	x6527641000033114	-	Pr	Tephine 200microgram sublingual tablets (Sandoz Ltd)	b	Ex	<50	<50	<50	90%	66.9	35%
A	x1426141000033112	-	Pr	Temgesic 200microgram sublingual tablets (Indivior UK Ltd)	b	Ex	13256	582	12674	96%	55.3 (42.7-68.5)	41%
A	x172641000033116	-	Pr	Buprenorphine 200microgram sublingual tablets sugar free	b	Ex	27912	2998	24914	89%	56.1 (42.9-70.1)	39%
A	x1080541000033116	-	Pr	Physeptone 5mg tablets (Martindale Pharmaceuticals Ltd)	m	Ex	1059	952	107	10%	38.1 (32.5-44.6)	70%
A	x897141000033112	-	Pr	Methadone 5mg tablets	m	Ex	2952	2155	797	27%	42.5 (33.7-53.5)	62%
A	x2092941000033111	-	Pr	Methadone hydrochloride powder	m	Ex	<50	<50	<50	50%	27.8	50%
A	x2659341000033116	-	Pr	Methadone 50mg/2ml solution for injection ampoules	m	Ex	<50	<50	<50	20%	47.4	67%
A	x3030741000033111	-	Pr	Synastone 50mg/2ml solution for injection ampoules (Auden McKenzie (Pharma Division) Ltd)	m	Ex	-	-	-	-	-	-
A	x5836741000033118	-	Pr	Physeptone 50mg/2ml solution for injection ampoules (Martindale Pharmaceuticals Ltd)	m	Ex	-	-	-	-	-	-
A	x5836641000033110	-	Pr	Physeptone 50mg/1ml solution for injection ampoules (Martindale Pharmaceuticals Ltd)	m	Ex	<50	<50	<50	0%	44.0	67%
A	x3030641000033119	-	Pr	Synastone 50mg/1ml solution for injection ampoules (Auden McKenzie (Pharma Division) Ltd)	m	Ex	-	-	-	-	-	-
A	x883141000033115	-	Pr	Methadone 50mg/1ml solution for injection ampoules	m	Ex	134	110-120	20-20	10%	39.7 (33.2-48.9)	72%
A	x11029341000033114	-	Pr	Buteac 5micrograms/hour transdermal patches (Qdem Pharmaceuticals Ltd)	b	Ex	43018	293	42725	99%	79.1 (66.2-86.9)	27%
A	x12409541000033116	-	Pr	Busiete 5micrograms/hour transdermal patches (Teva UK Ltd)	b	Ex	57	0-0	50-60	100%	78.8 (59.8-83.7)	26%
A	x12325741000033112	-	Pr	Bupramyl 5micrograms/hour transdermal patches (Mylan)	b	Ex	<50	<50	<50	100%	76.8	36%
A	x12603441000033118	-	Pr	Bunov 5micrograms/hour transdermal patches (Glenmark Pharmaceuticals Europe Ltd)	b	Ex	494	0-10	490-490	100%	78.4 (63.7-87.0)	20%
A	x11732541000033112	-	Pr	Reletrans 5micrograms/hour transdermal patches (Sandoz Ltd)	b	Ex	1981	10-20	1960-1970	100%	77.6 (62.9-85.8)	27%
A	x11730941000033119	-	Pr	Panitaz 5micrograms/hour transdermal patches (Dr Reddy's Laboratories (UK) Ltd)	b	Ex	134	0-10	130-130	100%	68.4 (55.8-83.3)	31%
A	x11756241000033110	-	Pr	Sevodyne 5micrograms/hour transdermal patches (Aspire Pharma Ltd)	b	Ex	960	0-10	950-960	100%	76.1 (60.5-84.3)	25%
A	x3343641000033113	-	Pr	BuTrans 5micrograms/hour transdermal patches (Napp Pharmaceuticals Ltd)	b	Ex	47902	479	47423	99%	75.1 (60.5-84.4)	28%
A	x3343341000033117	-	Pr	Buprenorphine 5micrograms/hour transdermal patches	b	Ex	117312	1210	116102	99%	75.9 (61.2-84.9)	28%
A	x11029541000033119	-	Pr	Buteac 20micrograms/hour transdermal patches (Qdem Pharmaceuticals Ltd)	b	Ex	11927	238	11689	98%	72.4 (57.5-83.2)	29%
A	x11756441000033111	-	Pr	Sevodyne 20micrograms/hour transdermal patches (Aspire Pharma Ltd)	b	Ex	342	0-10	330-340	100%	67.9 (54.9-79.5)	30%
A	x11730841000033110	-	Pr	Panitaz 20micrograms/hour transdermal patches (Dr Reddy's Laboratories (UK) Ltd)	b	Ex	85	0-10	80-90	100%	59.6 (48.0-80.7)	32%
A	x11732441000033111	-	Pr	Reletrans 20micrograms/hour transdermal patches (Sandoz Ltd)	b	Ex	621	10-20	600-610	100%	70.3 (55.9-82.2)	31%
A	x12603341000033112	-	Pr	Bunov 20micrograms/hour transdermal patches (Glenmark Pharmaceuticals Europe Ltd)	b	Ex	241	0-10	230-240	100%	70.9 (58.1-82.1)	30%
A	x12326041000033117	-	Pr	Bupramyl 20micrograms/hour transdermal patches (Mylan)	b	Ex	<50	<50	<50	100%	62.1	16%
A	x12409741000033112	-	Pr	Busiete 20micrograms/hour transdermal patches (Teva UK Ltd)	b	Ex	<50	<50	<50	100%	79.1	27%
A	x3343541000033112	-	Pr	Buprenorphine 20micrograms/hour transdermal patches	b	Ex	30630	754	29876	98%	71.0 (55.7-81.9)	31%
A	x3343841000033114	-	Pr	BuTrans 20micrograms/hour transdermal patches (Napp Pharmaceuticals Ltd)	b	Ex	12573	275	12298	98%	69.6 (54.6-80.7)	31%
A	x11029441000033115	-	Pr	Buteac 10micrograms/hour transdermal patches (Qdem Pharmaceuticals Ltd)	b	Ex	30875	338	30537	99%	76.7 (62.6-85.4)	28%
A	x12409641000033115	-	Pr	Busiete 10micrograms/hour transdermal patches (Teva UK Ltd)	b	Ex	57	0-0	50-60	100%	78.5 (59.3-83.1)	28%
A	x12325941000033110	-	Pr	Bupramyl 10micrograms/hour transdermal patches (Mylan)	b	Ex	<50	<50	<50	100%	76.3	33%
A	x12603241000033119	-	Pr	Bunov 10micrograms/hour transdermal patches (Glenmark Pharmaceuticals Europe Ltd)	b	Ex	448	0-10	440-450	100%	74.2 (60.6-86.0)	25%
A	x11732241000033110	-	Pr	Reletrans 10micrograms/hour transdermal patches (Sandoz Ltd)	b	Ex	1497	10-20	1470-1480	100%	74.2 (60.2-84.1)	29%
A	x11730741000033117	-	Pr	Panitaz 10micrograms/hour transdermal patches (Dr Reddy's Laboratories (UK) Ltd)	b	Ex	149	0-10	140-150	100%	68.0 (53.1-82.2)	29%
A	x11756341000033117	-	Pr	Sevodyne 10micrograms/hour transdermal patches (Aspire Pharma Ltd)	b	Ex	763	0-10	750-760	100%	72.8 (57.5-83.5)	28%
A	x3343441000033111	-	Pr	Buprenorphine 10micrograms/hour transdermal patches	b	Ex	79977	1241	78736	98%	73.5 (58.4-83.5)	30%
A	x3343741000033116	-	Pr	BuTrans 10micrograms/hour transdermal patches (Napp Pharmaceuticals Ltd)	b	Ex	31970	436	31534	99%	72.3 (57.4-82.7)	30%
A	x4010841000033112	-	Pr	Suboxone 2mg/500microgram sublingual tablets (Indivior UK Ltd)	b	Def	501	490-500	0-10	0%	35.7 (30.6-41.3)	73%
A	x4010641000033111	-	Pr	Buprenorphine 2mg / Naloxone 500microgram sublingual tablets sugar free	b	Def	419	400-410	10-20	0%	37.8 (30.9-44.4)	76%
A	x4010741000033119	-	Pr	Buprenorphine 8mg / Naloxone 2mg sublingual tablets sugar free	b	Def	363	360-360	0-10	0%	36.8 (30.9-43.5)	77%
A	x4010941000033116	-	Pr	Suboxone 8mg/2mg sublingual tablets (Indivior UK Ltd)	b	Def	495	480-490	0-10	0%	35.3 (29.7-41.1)	73%
A	x4268241000033115	-	Pr	Eptadone 5mg/ml oral solution (Dee Pharmaceuticals Ltd)	m	Ex	-	-	-	-	-	-
A	x6067641000033118	-	Pr	Methadone 100mg capsules	m	Ex	<50	<50	<50	50%	47.5	50%
A	x5008841000033117	-	Pr	Methadone 30mg capsules	m	Ex	<50	<50	<50	50%	49.4	64%
A	x4815541000033118	-	Pr	Methadone 5mg capsules	m	Def	106	70-80	20-30	30%	48.7 (38.7-60.1)	51%

Data-base	Medcode	ReadCode / SNOMED	Type	Term	Meth / bupe	Status	Number in database	Number in cohort	Dropped	% dropped	Median age (IQR)	% Male
A	x10045241000033110	-	Pr	Buprenorphine 1mg sublingual tablets sugar free	b	Def	54	50-60	0-10	10%	41.2 (32.6-47.3)	76%
A	x10045541000033112	-	Pr	Gabup 1mg sublingual tablets (Martindale Pharmaceuticals Ltd)	b	Ex	-	-	-	-	-	-
A	x10045941000033118	-	Pr	Gabup 4mg sublingual tablets (Martindale Pharmaceuticals Ltd)	b	Ex	-	-	-	-	-	-
A	x10045641000033113	-	Pr	Buprenorphine 4mg sublingual tablets sugar free	b	Def	77	70-80	0-10	0%	38.3 (33.8-44.7)	73%
A	x10045441000033111	-	Pr	Buprenorphine 6mg sublingual tablets sugar free	b	Def	54	50-60	0-10	0%	37.3 (33.0-47.2)	70%
A	x10046041000033111	-	Pr	Gabup 6mg sublingual tablets (Martindale Pharmaceuticals Ltd)	b	Ex	-	-	-	-	-	-
A	x11077241000033112	-	Pr	BuTrans 15micrograms/hour transdermal patches (Napp Pharmaceuticals Ltd)	b	Ex	1302	20-30	1270-1280	100%	72.9 (57.5-82.6)	29%
A	x11077041000033116	-	Pr	Buprenorphine 15micrograms/hour transdermal patches	b	Ex	3864	50	3814	99%	74.7 (59.9-83.9)	29%
A	x12106841000033113	-	Pr	Buteac 15micrograms/hour transdermal patches (Qdem Pharmaceuticals Ltd)	b	Ex	7203	96	7107	99%	75.9 (61.6-85.2)	28%
A	x11732341000033117	-	Pr	Reletrans 15micrograms/hour transdermal patches (Sandoz Ltd)	b	Ex	550	0-10	540-550	100%	72.3 (57.4-83.8)	28%
A	x11707841000033116	-	Pr	Buprenorphine 16mg / Naloxone 4mg sublingual tablets sugar free	b	Ex	<50	<50	<50	30%	45.2	55%
A	x11707941000033112	-	Pr	Suboxone 16mg/4mg sublingual tablets (Indivior UK Ltd)	b	Ex	<50	<50	<50	30%	46.2	67%
A	x11789141000033119	-	Pr	Buprenorphine 2mg oral lyophilisates sugar free	b	Def	87	80-90	0-10	0%	40.2 (35.7-47.3)	70%
A	x11789341000033116	-	Pr	Espranor 2mg oral lyophilisates (Martindale Pharmaceuticals Ltd)	b	Def	122	120-130	0-10	0%	42.6 (37.2-48.5)	73%
A	x11789241000033114	-	Pr	Buprenorphine 8mg oral lyophilisates sugar free	b	Def	62	60-70	0-0	0%	42.1 (36.4-51.5)	81%
A	x11789441000033110	-	Pr	Espranor 8mg oral lyophilisates (Martindale Pharmaceuticals Ltd)	b	Def	113	110-120	0-10	0%	42.8 (39.4-49.3)	80%
A	x2922641000033116	-	Pr	Buprenorphine 300micrograms/1ml solution for injection ampoules	b	Ex	<50	<50	<50	80%	78.9	42%
A	x2922741000033113	-	Pr	Temgesic 300micrograms/1ml solution for injection ampoules (Indivior UK Ltd)	b	Ex	<50	<50	<50	100%	52.8	67%
A	x8882741000033116	-	Pr	Hapoctasin 35micrograms/hour transdermal patches (Actavis UK Ltd)	b	Ex	272	10-20	250-260	90%	61.4 (48.8-77.3)	31%
A	x11484341000033112	-	Pr	Bupeaze 35micrograms/hour transdermal patches (Dr Reddy's Laboratories (UK) Ltd)	b	Ex	372	10-20	350-360	100%	68.6 (54.3-80.7)	29%
A	x11507941000033111	-	Pr	Prenotrix 35micrograms/hour transdermal patches (Genesis Pharmaceuticals Ltd)	b	Ex	<50	<50	<50	100%	62.3	50%
A	x2737541000033111	-	Pr	Buprenorphine 35micrograms/hour transdermal patches	b	Ex	13636	532	13104	96%	68.6 (53.3-80.0)	33%
A	x12603541000033117	-	Pr	Carlosafine 35micrograms/hour transdermal patches (Glenmark Pharmaceuticals Europe Ltd)	b	Ex	<50	<50	<50	100%	40.2	0%
A	x12428441000033117	-	Pr	Turgeon 35micrograms/hour transdermal patches (Teva UK Ltd)	b	Ex	<50	<50	<50	90%	70.4	30%
A	x12194941000033112	-	Pr	Relevtec 35micrograms/hour transdermal patches (Sandoz Ltd)	b	Ex	69	0-10	60-70	90%	68.8 (55.8-82.5)	35%
A	x11780641000033117	-	Pr	Buplast 35micrograms/hour transdermal patches (Mylan)	b	Ex	<50	<50	<50	100%	74.3	33%
A	x2737841000033113	-	Pr	Transtec 35micrograms/hour transdermal patches (Napp Pharmaceuticals Ltd)	b	Ex	6167	211	5956	97%	67.4 (52.4-79.4)	33%
A	x11577141000033119	-	Pr	Prenotrix 52.5micrograms/hour transdermal patches (Genesis Pharmaceuticals Ltd)	b	Ex	<50	<50	<50	100%	63.8	20%
A	x11484441000033118	-	Pr	Bupeaze 52.5micrograms/hour transdermal patches (Dr Reddy's Laboratories (UK) Ltd)	b	Ex	224	0-10	210-220	100%	65.5 (51.8-79.6)	34%
A	x8882841000033114	-	Pr	Hapoctasin 52.5micrograms/hour transdermal patches (Actavis UK Ltd)	b	Ex	148	0-10	130-140	90%	63.0 (50.0-77.2)	38%
A	x12195041000033112	-	Pr	Relevtec 52.5micrograms/hour transdermal patches (Sandoz Ltd)	b	Ex	<50	<50	<50	100%	69.9	32%
A	x11780741000033114	-	Pr	Buplast 52.5micrograms/hour transdermal patches (Mylan)	b	Ex	<50	<50	<50	100%	72.9	50%
A	x12428541000033116	-	Pr	Turgeon 52.5micrograms/hour transdermal patches (Teva UK Ltd)	b	Ex	<50	<50	<50	100%	77.4	29%
A	x12603641000033116	-	Pr	Carlosafine 52.5micrograms/hour transdermal patches (Glenmark Pharmaceuticals Europe Ltd)	b	Ex	<50	<50	<50	100%	53.4	33%
A	x2737641000033112	-	Pr	Buprenorphine 52.5micrograms/hour transdermal patches	b	Ex	5508	322	5186	94%	66.8 (52.1-78.9)	35%
A	x2737941000033117	-	Pr	Transtec 52.5micrograms/hour transdermal patches (Napp Pharmaceuticals Ltd)	b	Ex	2542	119	2423	95%	65.7 (51.4-78.0)	36%
A	x8882941000033118	-	Pr	Hapoctasin 70micrograms/hour transdermal patches (Actavis UK Ltd)	b	Ex	91	0-10	80-90	90%	62.5 (51.1-76.6)	30%
A	x11484541000033117	-	Pr	Bupeaze 70micrograms/hour transdermal patches (Dr Reddy's Laboratories (UK) Ltd)	b	Ex	141	0-10	130-140	90%	64.5 (54.5-76.3)	40%
A	x11577241000033114	-	Pr	Prenotrix 70micrograms/hour transdermal patches (Genesis Pharmaceuticals Ltd)	b	Ex	<50	<50	<50	50%	46.0	0%
A	x2737741000033115	-	Pr	Buprenorphine 70micrograms/hour transdermal patches	b	Ex	2830	211	2619	93%	65.5 (50.5-77.8)	37%
A	x12603741000033113	-	Pr	Carlosafine 70micrograms/hour transdermal patches (Glenmark Pharmaceuticals Europe Ltd)	b	Ex	-	-	-	-	-	-
A	x12428641000033115	-	Pr	Turgeon 70micrograms/hour transdermal patches (Teva UK Ltd)	b	Ex	<50	<50	<50	100%	71.2	17%
A	x12195141000033111	-	Pr	Relevtec 70micrograms/hour transdermal patches (Sandoz Ltd)	b	Ex	<50	<50	<50	90%	63.4	30%
A	x11780841000033116	-	Pr	Buplast 70micrograms/hour transdermal patches (Mylan)	b	Ex	<50	<50	<50	100%	59.8	50%
A	x2738041000033119	-	Pr	Transtec 70micrograms/hour transdermal patches (Napp Pharmaceuticals Ltd)	b	Ex	1371	85	1286	94%	65.0 (50.8-77.3)	38%
A	x2661441000033119	-	Pr	Synastone 50mg/5ml solution for injection ampoules (Auden McKenzie (Pharma Division) Ltd)	m	Ex	-	-	-	-	-	-
A	x1977841000033116	-	Pr	Methadone 50mg/5ml solution for injection ampoules	m	Ex	<50	<50	<50	50%	55.2	71%
A	x2069241000033110	-	Pr	Physeptone 50mg/5ml solution for injection ampoules (Martindale Pharmaceuticals Ltd)	m	Ex	<50	<50	<50	0%	40.9	100%
A	x1654441000033113	-	Pr	Methadose diluent oral solution sugar free (Rosemont Pharmaceuticals Ltd)	m	Ex	<50	<50	<50	0%	30.2	20%
A	x2069441000033111	-	Pr	Methadone 10mg/1ml solution for injection ampoules	m	Ex	167	87	80	48%	51.9 (39.2-67.1)	66%
A	x2069341000033117	-	Pr	Physeptone 10mg/1ml solution for injection ampoules (Martindale Pharmaceuticals Ltd)	m	Ex	<50	<50	<50	20%	53.5	67%

Data-base	Medcode	ReadCode / SNOMED	Type	Term	Meth / bupe	Status	Number in database	Number in cohort	Dropped	% dropped	Median age (IQR)	% Male
A	x2661141000033110	-	Pr	Synastone 10mg/1ml solution for injection ampoules (Auden McKenzie (Pharma Division) Ltd)	m	Ex	-	-	-	-	-	-
A	x1655941000033119	-	Pr	Methadone 10mg/ml oral solution sugar free	m	Def	709	652	57	8%	41.9 (33.7-52.0)	66%
A	x1655741000033117	-	Pr	Methadose 10mg/ml oral solution concentrate (Rosemont Pharmaceuticals Ltd)	m	Ex	<50	<50	<50	20%	35.8	57%
A	x888541000033115	-	Pr	Methadone 1mg/ml oral solution	m	Def	26831	26288	543	2%	33.1 (27.1-40.3)	70%
A	x2957241000033118	-	Pr	Physeptone 1mg/ml mixture (Martindale Pharmaceuticals Ltd)	m	Def	839	830-840	0-10	0%	39.0 (33.3-44.9)	69%
A	x4268141000033110	-	Pr	Eptadone 1mg/ml oral solution (Dee Pharmaceuticals Ltd)	m	Ex	<50	<50	<50	0%	30.8	100%
A	x2003041000033115	-	Pr	Methadone 1mg/ml oral solution sugar free	m	Def	13751	13547	204	2%	36.8 (30.8-44.1)	70%
A	x2103941000033113	-	Pr	Metharose 1mg/ml oral solution sugar free (Rosemont Pharmaceuticals Ltd)	m	Ex	<50	<50	<50	10%	41.4	50%
A	x2957141000033113	-	Pr	Physeptone 1mg/ml oral solution sugar free (Martindale Pharmaceuticals Ltd)	m	Def	2304	2290-2300	10-20	0%	38.0 (32.5-44.1)	71%
A	x1977541000033118	-	Pr	Methadone 20mg/2ml solution for injection ampoules	m	Ex	<50	<50	<50	40%	49.9	67%
A	x2069041000033119	-	Pr	Physeptone 20mg/2ml solution for injection ampoules (Martindale Pharmaceuticals Ltd)	m	Ex	<50	<50	<50	50%	38.3	100%
A	x1656041000033112	-	Pr	Methadone 20mg/ml oral solution sugar free	m	Def	152	140-150	0-10	0%	41.9 (35.0-51.1)	68%
A	x1655841000033110	-	Pr	Methadose 20mg/ml oral solution concentrate (Rosemont Pharmaceuticals Ltd)	m	Ex	<50	<50	<50	40%	41.9	80%
A	x887841000033119	-	Pr	Methadone 2mg/5ml linctus	m	Ex	1107	106	1001	90%	66.8 (54.2-75.0)	52%
A	x1977641000033117	-	Pr	Methadone 35mg/3.5ml solution for injection ampoules	m	Ex	<50	<50	<50	20%	38.2	77%
A	x2069141000033115	-	Pr	Physeptone 35mg/3.5ml solution for injection ampoules (Martindale Pharmaceuticals Ltd)	m	Ex	<50	<50	<50	0%	38.0	100%
A	x342466013	x228389003	Me	Groin injector	-	Prob	63	50-60	0-10	10%	35.8 (31.2-42.9)	67%
A	x342474014	x228396001	Me	Does not share drug injection equipment	-	Prob	161	110-120	40-50	30%	37.7 (32.5-46.0)	73%
A	x407241000000119	x248601000000106	Me	Neck injector	-	Prob	<50	<50	<50	70%	44.8	86%
A	x342468014	x228391006	Me	Drug injection behaviour	-	Prob	<50	<50	<50	50%	34.2	70%
A	x2474734017	x371435006	Me	[V]Personal history of drug abuse by injection	-	Prob	539	326	213	40%	31.4 (24.2-40.4)	77%
A	x417771000006112	x295174006	Me	[X]Overdose - heroin	-	Prob	3329	2494	835	25%	30.9 (24.7-38.3)	80%
A	x2549886016	x712545004	Me	Abstinent from drug misuse on maintenance replacement	-	Prob	89	80-90	0-10	10%	41.1 (36.4-47.1)	76%
A	x467941000006119	x292056009	Me	Adverse reaction to heroin, diamorphine	-	Prob	72	20-30	40-50	60%	35.3 (28.1-51.8)	50%
A	x1772531000006119	x1772531000006103	Me	Clinical Opiate Withdrawal Scale	-	Prob	<50	<50	<50	0%	57.3	100%
A	x1774961000000119	x763699005	Me	Clinical opiate withdrawal scale	-	Prob	92	50-60	30-40	40%	43.4 (35.3-52.2)	57%
A	x968671000006118	x968671000006102	Me	Currently injecting drugs	-	Prob	477	460-470	10-20	0%	36.9 (32.0-41.1)	74%
A	x512101000000118	x277091000000105	Me	H/O methadone misuse	-	Def	256	250-250	0-10	0%	34.7 (25.9-41.1)	65%
A	x339576014	x226034001	Me	Injecting drug user	-	Prob	3231	2716	515	16%	32.8 (26.2-39.7)	75%
A	x342465012	x228388006	Me	Intravenous drug user	-	Prob	5330	3889	1441	27%	32.0 (25.0-39.5)	72%
A	x1971531000006116	x1971531000006100	Me	Mental & behav dis due to use opioids: psychotic disorder, predominantly polymorphic	-	Def	<50	<50	<50	50%	49.7	100%
A	x969121000006115	x969121000006104	Me	Misuse of Anileridine	-	Def	<50	<50	<50	100%	73.4	100%
A	x969271000006114	x969271000006105	Me	Misuse of Codeine linctus	-	Def	<50	<50	<50	20%	49.7	64%
A	x969231000006111	x969231000006107	Me	Misuse of Codeine tablets	-	Prob	965	310	655	68%	37.7 (30.9-47.1)	42%
A	x969061000006110	x969061000006106	Me	Misuse of Dextromoramide	-	Def	<50	<50	<50	100%	73.4	100%
A	x969251000006116	x969251000006100	Me	Misuse of Dextropropoxyphene	-	Def	<50	<50	<50	50%	52.7	100%
A	x968811000006111	x968811000006107	Me	Misuse of Diamorphine Hydrochl amps	-	Def	<50	<50	<50	100%	73.4	100%
A	x969151000006112	x969151000006108	Me	Misuse of Ethoheptazine	-	Def	<50	<50	<50	100%	73.4	100%
A	x969301000006111	x969301000006107	Me	Misuse of Gee's linctus	-	Def	<50	<50	<50	50%	38.9	100%
A	x969211000006117	x969211000006101	Me	Misuse of Meptazinol	-	Def	<50	<50	<50	50%	68.7	25%
A	x969261000006119	x969261000006103	Me	Misuse of Opiate containing mixture	-	Def	<50	<50	<50	10%	40.6	56%
A	x969281000006112	x969281000006108	Me	Misuse of Pentazocine	-	Def	<50	<50	<50	50%	48.9	50%
A	x969191000006118	x969191000006102	Me	Misuse of Phenazocine	-	Def	<50	<50	<50	100%	73.4	100%
A	x969181000006116	x969181000006100	Me	Misuse of Phenoperidine	-	Def	<50	<50	<50	100%	73.4	100%
A	x882501000006119	x191816009	Me	Morphine/cocaine dependence	-	Def	1489	1460-1470	20-30	0%	26.6 (21.8-32.6)	73%
A	x882501000006119	x191816009	Me	Morphine/cocaine dependence	-	Def	1489	1460-1470	20-30	0%	26.6 (21.8-32.6)	73%
A	x988901000006116	x191816009	Me	Morphine/cocaine dependence	-	Def	<50	<50	<50	30%	43.9	100%
A	x988901000006116	x191816009	Me	Morphine/cocaine dependence	-	Def	<50	<50	<50	30%	43.9	100%
A	x882501000006119	x191816009	Me	Morphine/cocaine dependence	-	Def	1489	1460-1470	20-30	0%	26.6 (21.8-32.6)	73%
A	x882501000006119	x191816009	Me	Morphine/cocaine dependence	-	Def	1489	1460-1470	20-30	0%	26.6 (21.8-32.6)	73%
A	x988901000006116	x191816009	Me	Morphine/cocaine dependence	-	Def	<50	<50	<50	30%	43.9	100%

Data-base	Medcode	ReadCode / SNOMED	Type	Term	Meth / bupe	Status	Number in database	Number in cohort	Dropped	% dropped	Median age (IQR)	% Male
A	x988901000006116	x191816009	Me	Morphine/cocaine dependence	-	Def	<50	<50	<50	30%	43.9	100%
A	x2639961000000113	x1047881000000106	Me	Opioid analgesic dependence	-	Prob	206	20-30	170-180	90%	53.7 (41.4-64.2)	39%
A	x2548992019	x416479009	Me	Previously injecting drug user	-	Prob	2313	2092	221	10%	38.5 (32.5-45.1)	72%
A	x342473015	x228395002	Me	Sharing of drug injecting equipment	-	Prob	<50	<50	<50	30%	38.2	80%
A	x968661000006113	x968661000006109	Me	Previously injected drugs	-	Prob	<50	<50	<50	0%	35.0	0%
A	x295297018	x191914006	Me	Nondependent opioid abuse in remission	-	Def	<50	<50	<50	0%	22.0	50%
A	x295232014	x191869005	Me	Combined opioid with other drug dependence in remission	-	Def	<50	<50	<50	0%	32.7	72%
A	x295156018	x191821007	Me	Opioid dependence in remission	-	Def	717	710-720	0-10	0%	31.8 (26.2-38.6)	73%
A	x477031000000112	x278031000000108	Me	Previous history of opiate misuse	-	Def	197	190-200	0-10	0%	36.0 (28.3-42.9)	64%
A	x475831000000113	x277431000000104	Me	Previous history of methadone misuse	-	Def	<50	<50	<50	0%	34.5	50%
A	x1976531000006113	x1976531000006109	Me	Mental and behav dis due to use opioids: dependence syndr, currently abstinent, but in a protected environment	-	Def	<50	<50	<50	100%	73.4	100%
A	x475531000000111	x277281000000101	Me	Previous history of heroin misuse	-	Def	621	610-620	0-10	0%	33.2 (25.7-42.2)	68%
A	x328544015	x216463005	Me	Accidental poisoning by heroin	-	Prob	-	-	-	-	-	-
A	x1220925010	x13187008	Me	Heroin poisoning	-	Prob	-	-	-	-	-	-
A	x361941000006116	x216463005	Me	[X]Accidental poisoning with heroin	-	Prob	-	-	-	-	-	-
A	x295296010	x191913000	Me	Nondependent opioid abuse, episodic	-	Def	<50	<50	<50	10%	29.0	44%
A	x295228015	x191865004	Me	Combined opioid with other drug dependence	-	Def	749	740-750	0-10	0%	32.0 (25.2-38.9)	70%
A	x295295014	x191912005	Me	Nondependent opioid abuse, continuous	-	Def	<50	<50	<50	0%	30.1	50%
A	x295154015	x191819002	Me	Continuous opioid dependence	-	Def	2166	2120-2130	40-40	0%	33.7 (27.4-40.1)	67%
A	x295155019	x191820008	Me	Episodic opioid dependence	-	Def	412	400-410	0-10	0%	31.7 (25.8-39.1)	70%
A	x295231019	x191868002	Me	Combined opioid with other drug dependence, episodic	-	Def	<50	<50	<50	0%	34.0	81%
A	x295230018	x191867007	Me	Combined opioid with other drug dependence, continuous	-	Def	99	90-100	0-10	0%	30.9 (27.0-36.7)	76%
A	x295290016	x191909007	Me	Nondependent opioid abuse	-	Def	357	340-350	10-20	0%	29.4 (23.4-37.4)	67%
A	x346951016	x231480002	Me	Opium dependence	-	Def	560	540-550	10-20	0%	32.1 (26.9-40.3)	75%
A	x346949015	x231478008	Me	Methadone dependence	-	Def	7519	7425	94	1%	33.9 (27.5-41.2)	68%
A	x346950015	x231479000	Me	Morphine dependence	-	Def	930	875	55	6%	31.1 (24.4-41.8)	63%
A	x346947018	x231477003	Me	Heroin dependence	-	Def	28514	28223	291	1%	27.3 (22.1-34.1)	72%
A	x1485129010	x391102000	Me	Failed heroin detoxification	-	Def	886	880-880	0-10	0%	28.0 (24.0-34.0)	71%
A	x303011000000111	x200031000000103	Me	Drug addiction maintenance therapy - methadone	-	Def	5459	5402	57	1%	36.3 (30.0-43.6)	70%
A	x314821000000113	x205231000000102	Me	Opiate dependence detoxification	-	Def	3311	3248	63	2%	34.7 (28.6-41.7)	71%
A	x309921000000119	x202991000000100	Me	Heroin misuse	-	Def	3062	3030-3040	30-40	0%	31.8 (24.7-40.5)	72%
A	x316931000000112	x206131000000102	Me	Drug addiction detoxification therapy - buprenorphine	-	Def	879	870-880	0-10	0%	37.6 (31.2-45.0)	76%
A	x302981000000113	x200021000000100	Me	Drug addiction detoxification therapy - methadone	-	Def	3415	3380-3390	20-30	0%	33.0 (26.7-39.9)	69%
A	x316901000000118	x206121000000104	Me	Drug addiction maintenance therapy - buprenorphine	-	Def	1484	1470-1480	10-10	0%	38.8 (32.7-45.2)	77%
A	x512241000000113	x277221000000102	Me	H/O daily heroin misuse	-	Def	526	520-530	0-10	0%	34.3 (27.6-42.4)	77%
A	x512651000000113	x279461000000104	Me	Uses heroin on top of substitution therapy	-	Def	502	490-500	0-10	0%	38.3 (32.6-44.6)	71%
A	x495611000000112	x286841000000101	Me	Reinduction to methadone maintenance therapy	-	Def	120	110-120	0-10	0%	37.2 (31.7-44.9)	75%
A	x512201000000110	x276981000000107	Me	H/O opiate misuse	-	Def	1342	1300-1310	30-40	0%	36.0 (28.9-43.6)	67%
A	x512281000000117	x277371000000108	Me	H/O weekly methadone misuse	-	Def	<50	<50	<50	10%	33.0	63%
A	x512441000000112	x278001000000102	Me	H/O infrequent opiate misuse	-	Def	<50	<50	<50	10%	37.7	47%
A	x512261000000114	x277311000000103	Me	H/O infrequent heroin misuse	-	Def	92	80-90	0-10	0%	35.8 (25.0-43.4)	73%
A	x512271000000119	x277341000000102	Me	H/O daily methadone misuse	-	Def	<50	<50	<50	0%	35.6	67%
A	x512421000000117	x277941000000101	Me	H/O daily opiate misuse	-	Def	213	200-210	0-10	0%	39.4 (31.0-47.7)	58%
A	x541451000000111	x304681000000107	Me	Opioid agonist substitution therapy	-	Def	340	330-340	0-10	0%	38.8 (32.9-45.6)	77%
A	x475771000000117	x277401000000105	Me	H/O infrequent methadone misuse	-	Def	<50	<50	<50	10%	34.5	56%
A	x512431000000115	x277971000000107	Me	H/O weekly opiate misuse	-	Def	<50	<50	<50	10%	35.2	65%
A	x495671000000119	x286871000000107	Me	Reinduction to buprenorphine maintenance therapy	-	Def	54	50-60	0-10	0%	43.3 (36.1-48.4)	67%
A	x512631000000118	x279441000000100	Me	H/O heroin misuse	-	Def	2837	2800-2810	30-30	0%	31.0 (24.7-39.4)	71%
A	x512251000000111	x277251000000107	Me	H/O weekly heroin misuse	-	Def	107	100-110	0-10	0%	37.9 (30.9-44.6)	74%
A	x512661000000111	x279491000000105	Me	Does not use heroin on top of substitution therapy	-	Def	287	280-290	0-10	0%	40.8 (35.0-47.7)	75%

Data-base	Medcode	ReadCode / SNOMED	Type	Term	Meth / bupe	Status	Number in database	Number in cohort	Dropped	% dropped	Median age (IQR)	% Male
A	x968901000006119	x968901000006103	Me	Misuse of Methadone mixture	-	Def	<50	<50	<50	10%	44.7	65%
A	x969021000006116	x969021000006100	Me	Misuse of Morphine Sulphate	-	Prob	52	10-20	30-40	70%	37.9 (25.4-53.8)	48%
A	x969161000006114	x969161000006105	Me	Misuse of Fentanyl	-	Def	<50	<50	<50	30%	59.6	39%
A	x969381000006119	x969381000006103	Me	Misuse of Kaolin and Morphine	-	Def	<50	<50	<50	20%	42.5	60%
A	x987521000006119	x987521000006103	Me	Drugs used within the past month - Heroin	-	Def	125	120-130	0-10	0%	40.1 (33.4-49.4)	68%
A	x969051000006113	x969051000006109	Me	Misuse of Dihydrocodeine	-	Def	245	220-230	20-30	10%	37.9 (31.0-47.8)	51%
A	x969101000006113	x969101000006109	Me	Misuse of Hydromorphone	-	Def	<50	<50	<50	100%	73.4	100%
A	x969141000006110	x969141000006106	Me	Misuse of Oxycodone	-	Def	<50	<50	<50	30%	42.1	47%
A	x987531000006116	x987531000006100	Me	Drugs used within the past month - Methadone	-	Def	<50	<50	<50	0%	38.2	60%
A	x968841000006110	x968841000006106	Me	Substance misuse of Methadone	-	Def	131	120-130	0-10	0%	34.1 (26.1-43.7)	70%
A	x969041000006111	x969041000006107	Me	Misuse of Opium	-	Def	<50	<50	<50	0%	32.0	91%
A	x968821000006115	x968821000006104	Me	Misuse of Diamorphine Hydrochl reeferes	-	Def	<50	<50	<50	100%	73.4	100%
A	x968981000006111	x968981000006107	Me	Misuse of Methadone suppositories	-	Def	<50	<50	<50	100%	73.4	100%
A	x969081000006117	x969081000006101	Me	Misuse of Pethidine	-	Def	<50	<50	<50	10%	40.0	38%
A	x969111000006111	x969111000006107	Me	Misuse of Oxymorphone	-	Def	<50	<50	<50	100%	73.4	100%
A	x969241000006118	x969241000006102	Me	Misuse of Tramadol Hydrochloride	-	Prob	426	91	335	79%	39.8 (30.3-53.4)	43%
A	x969291000006110	x969291000006106	Me	Misuse of Buprenorphine	-	Def	68	60-70	0-10	0%	38.1 (30.7-42.5)	71%
A	x969331000006115	x969331000006104	Me	Misuse of Opiate compound analgesics	-	Def	95	80-90	10-20	10%	39.0 (29.9-48.6)	55%
A	x968961000006118	x968961000006102	Me	Misuse of Methadone amps	-	Def	<50	<50	<50	20%	38.3	83%
A	x968741000006115	x968741000006104	Me	Substance misuse of Heroin	-	Def	4236	4200-4210	30-30	0%	31.8 (24.2-39.6)	73%
A	x968771000006111	x968771000006107	Me	Misuse of Diamorphine	-	Def	<50	<50	<50	10%	28.0	72%
A	x969001000006114	x969001000006105	Me	Substance misuse of other Opiates	-	Def	183	180-190	0-10	0%	33.6 (24.7-42.3)	73%
A	x969091000006119	x969091000006103	Me	Misuse of Morphine Sulphate amps	-	Def	<50	<50	<50	30%	64.9	67%
A	x969391000006116	x969391000006100	Me	Misuse of other Opiates	-	Def	103	90-100	0-10	0%	35.9 (28.5-44.0)	69%
A	x968761000006116	x968761000006100	Me	Misuse of Heroin illicit	-	Def	524	510-510	10-20	0%	32.9 (26.5-40.8)	72%
A	x968791000006112	x968791000006108	Me	Misuse of Diamorphine Hydrochl elixir	-	Def	<50	<50	<50	100%	73.4	100%
A	x968871000006119	x968871000006103	Me	Misuse of Methadone unspecified	-	Def	126	120-120	0-10	0%	32.3 (25.0-41.8)	66%
A	x968951000006115	x968951000006104	Me	Misuse of Methadone tablets	-	Def	<50	<50	<50	10%	35.8	89%
A	x969011000006112	x969011000006108	Me	Misuse of Opiates unspecified	-	Def	1633	1580-1590	40-50	0%	34.9 (27.9-43.4)	68%
A	x969071000006115	x969071000006104	Me	Misuse of Dipianone	-	Def	<50	<50	<50	100%	73.4	100%
A	x969171000006119	x969171000006103	Me	Misuse of Levorphanol	-	Def	<50	<50	<50	100%	73.4	100%
A	x969221000006113	x969221000006109	Me	Misuse of Piriramide	-	Def	<50	<50	<50	100%	73.4	100%
A	x969311000006114	x969311000006105	Me	Misuse of Codeine unspecified	-	Prob	232	69	163	70%	37.3 (31.2-47.0)	45%
A	x969361000006112	x969361000006108	Me	Misuse of Alphaprodine	-	Def	<50	<50	<50	100%	73.4	100%
A	x295229011	x191865004	Me	Combined opioid with other drug dependence, unspecified	-	Def	89	80-90	0-10	0%	31.0 (25.0-37.1)	74%
A	x295293019	x191909007	Me	Nondependent opioid abuse, unspecified	-	Def	<50	<50	<50	0%	28.4	70%
A	x295157010	x75544000	Me	Opioid drug dependence NOS	-	Def	7955	7794	161	2%	32.0 (25.2-40.7)	69%
A	x295803018	x14784000	Me	[X]Mental and behavioural disorders due to use of opioids	-	Def	1609	1590-1600	10-20	0%	38.6 (31.2-45.5)	72%
A	x295153014	x75544000	Me	Unspecified opioid dependence	-	Def	1106	1060-1070	30-40	0%	32.9 (26.9-41.3)	68%
A	x295233016	x191865004	Me	Combined opioid with other drug dependence NOS	-	Def	73	60-70	0-10	10%	34.0 (27.0-44.5)	69%
A	x44291000006113	x75544000	Me	Opioid type drug dependence	-	Def	34642	33993	649	2%	31.2 (24.7-39.3)	70%
A	x371181000006118	x87132004	Me	[X]Cold turkey, opiate withdrawal	-	Def	835	698	137	16%	36.4 (27.9-52.0)	56%
A	x397661000006117	x943071000000104	Me	[X]Mental & behav dis due to use opioids: psychotic disorder	-	Def	91	80-90	0-10	0%	33.6 (25.5-40.9)	65%
A	x397901000006111	x5602001	Me	[X]Mental and behav dis due to use of opioids: harmful use	-	Def	309	300-310	0-10	0%	36.3 (29.0-44.1)	71%
A	x397941000006113	x87132004	Me	[X]Mental and behav dis due to use opioids: withdrawal state	-	Def	187	150-160	30-40	20%	36.8 (27.3-53.3)	54%
A	x397231000006112	x91388009	Me	[X]Men & behav dis due opioid: withdrawal state with delirium	-	Def	<50	<50	<50	10%	42.9	43%
A	x397931000006115	x75544000	Me	[X]Mental and behav dis due to use opioids: dependence syndr	-	Def	2565	2540-2550	20-30	0%	32.5 (25.0-41.9)	72%
A	x379281000006110	x75544000	Me	[X]Drug addiction - opioids	-	Def	4077	3958	119	3%	31.9 (25.3-39.8)	65%
A	x397451000006116	x91388009	Me	[X]Ment & behav dis due use opioids: unsp ment & behav dis	-	Def	83	80-90	0-10	0%	41.2 (29.8-46.8)	64%
A	x630131000006118	x310653000	Me	Drug addictn therap-methadone	-	Def	21026	20852	174	1%	32.7 (26.6-39.6)	70%
A	x388831000006113	x75544000	Me	[X]Heroin addiction	-	Def	16920	16711	209	1%	26.2 (21.9-32.7)	73%

Data-base	Medcode	ReadCode / SNOMED	Type	Term	Meth / bupe	Status	Number in database	Number in cohort	Dropped	% dropped	Median age (IQR)	% Male
A	x397261000006115	x14784000	Me	[X]Men & behav dis due to use opioids: oth men & behav dis	-	Def	52	50-60	0-10	0%	36.2 (29.9-43.6)	69%
A	x397651000006119	x77721001	Me	[X]Mental & behav dis due to use opioids: acute intoxication	-	Def	64	50-60	10-10	20%	39.9 (29.3-50.4)	52%
A	x397921000006118	x91388009	Me	[X]Mental and behav dis due to use opioids: amnesic syndrome	-	Def	<50	<50	<50	0%	44.2	82%
A	x298101000000113	x198021000000102	Me	Buprenorphine maintenance therapy	-	Def	907	870-880	30-40	0%	39.1 (33.1-46.3)	72%
A	x1715521000000114	x768711000000101	Me	Drug addiction maintenance therapy - lofexidine	-	Def	<50	<50	<50	0%	35.7	67%
A	x1880021000006116	x1880021000006100	Me	Opioid substitution therapy monitoring	-	Def	-	-	-	-	-	-
A	x1880021000006119	x1880021000006100	Me	Opioid substitution therapy monitoring	-	Def	-	-	-	-	-	-
A	x2296901000000113	x891951000000109	Me	Opioid substitution therapy monitoring	-	Def	91	80-90	0-10	10%	42.5 (37.4-49.1)	71%
A	x2296901000000113	x891951000000109	Me	Opioid substitution therapy monitoring	-	Def	91	80-90	0-10	10%	42.5 (37.4-49.1)	71%
A	x1971461000006112	x1971461000006108	Me	Men & behav dis due opioid: withdrawal state with delirium, with convulsions	-	Def	<50	<50	<50	100%	73.4	100%
A	x1971521000006119	x1971521000006103	Me	Mental & behav dis due to use opioids: psychotic disorder, predominantly hallucinatory	-	Def	<50	<50	<50	100%	73.4	100%
A	x1971601000006113	x1971601000006109	Me	Mental & behav dis due to use opioids: psychotic disorder, predominantly manic symptoms	-	Def	<50	<50	<50	100%	73.4	100%
A	x1971711000006115	x1971711000006104	Me	Mental & behav dis due to use opioids: resid & late-onset psychot dis, other persisting cognitive impairment	-	Def	<50	<50	<50	100%	73.4	100%
A	x1971421000006118	x1971421000006102	Me	Mental and behav dis due to use opioids: withdrawal state, uncomplicated	-	Def	<50	<50	<50	100%	73.4	100%
A	x1971451000006110	x1971451000006106	Me	Men & behav dis due opioid: withdrawal state with delirium, without convulsions	-	Def	<50	<50	<50	100%	73.4	100%
A	x1971471000006117	x1971471000006101	Me	Mental & behav dis due to use opioids: psychotic disorder, schizophrenia-like	-	Def	<50	<50	<50	100%	73.4	100%
A	x1971571000006118	x1971571000006102	Me	Mental & behav dis due to use opioids: psychotic disorder, predominantly depressive symptoms	-	Def	<50	<50	<50	100%	73.4	100%
A	x1971671000006119	x1971671000006103	Me	Mental & behav dis due to use opioids: resid & late-onset psychot dis, personality or behaviour disorder	-	Def	<50	<50	<50	30%	45.1	67%
A	x1971441000006113	x1971441000006109	Me	Mental and behav dis due to use opioids: withdrawal state, with convulsions	-	Def	<50	<50	<50	100%	73.4	100%
A	x1971741000006116	x1971741000006100	Me	Mental & behav dis due to use opioids: resid & late-onset psychot dis, late-onset psychotic disorder	-	Def	<50	<50	<50	100%	73.4	100%
A	x1976471000006112	x1976471000006108	Me	Mental & behav dis due to use opioids: acute intoxication, with convulsions	-	Def	<50	<50	<50	100%	73.4	100%
A	x1976551000006118	x1976551000006102	Me	Mental and behav dis due to use opioids: dependence syndr, currently on a clinically supervised maintenance or replacement regime [controlled dependence]	-	Def	<50	<50	<50	10%	48.6	90%
A	x1971501000006112	x1971501000006108	Me	Mental & behav dis due to use opioids: psychotic disorder, predominantly delusional	-	Def	<50	<50	<50	50%	59.8	100%
A	x1971631000006117	x1971631000006101	Me	Mental & behav dis due to use opioids: psychotic disorder, mixed	-	Def	<50	<50	<50	20%	39.7	50%
A	x1971651000006112	x1971651000006108	Me	Mental & behav dis due to use opioids: resid & late-onset psychot dis, flashbacks	-	Def	<50	<50	<50	100%	73.4	100%
A	x1971681000006116	x1971681000006100	Me	Mental & behav dis due to use opioids: resid & late-onset psychot dis, residual affective disorder	-	Def	<50	<50	<50	100%	73.4	100%
A	x1976301000006110	x1976301000006106	Me	Mental & behav dis due to use opioids: acute intoxication, with trauma or other bodily injury	-	Def	<50	<50	<50	100%	73.4	100%
A	x1976591000006112	x1976591000006108	Me	Mental and behav dis due to use opioids: dependence syndr, currently using the substance [active dependence]	-	Def	<50	<50	<50	20%	35.7	60%
A	x1976501000006117	x1976501000006101	Me	Mental and behav dis due to use opioids: dependence syndr, currently abstinent	-	Def	<50	<50	<50	100%	73.4	100%
A	x1976351000006114	x1976351000006105	Me	Mental & behav dis due to use opioids: acute intoxication, with delirium	-	Def	<50	<50	<50	100%	73.4	100%
A	x1976621000006114	x1976621000006105	Me	Mental and behav dis due to use opioids: dependence syndr, episodic use [dipsomania]	-	Def	<50	<50	<50	100%	73.4	100%
A	x1976281000006111	x1976281000006107	Me	Mental & behav dis due to use opioids: acute intoxication, uncomplicated	-	Def	<50	<50	<50	100%	73.4	100%
A	x1976331000006119	x1976331000006103	Me	Mental & behav dis due to use opioids: acute intoxication, with other medical complications	-	Def	<50	<50	<50	100%	73.4	100%
A	x1976421000006111	x1976421000006107	Me	Mental & behav dis due to use opioids: acute intoxication, with perceptual distortions	-	Def	<50	<50	<50	100%	73.4	100%
A	x1976581000006114	x1976581000006105	Me	Mental and behav dis due to use opioids: dependence syndr, currently abstinent, but receiving treatment with aversive or blocking drugs	-	Def	<50	<50	<50	30%	39.4	100%
A	x1880021000006116	x1880021000006100	Me	Opioid substitution therapy monitoring	-	Def	-	-	-	-	-	-
A	x1880021000006116	x1880021000006100	Me	Opioid substitution therapy monitoring	-	Def	-	-	-	-	-	-
A	x2296901000000113	x891951000000109	Me	Opioid substitution therapy monitoring	-	Def	91	80-90	0-10	10%	42.5 (37.4-49.1)	71%
A	x2296901000000113	x891951000000109	Me	Opioid substitution therapy monitoring	-	Def	91	80-90	0-10	10%	42.5 (37.4-49.1)	71%
A	x1971701000006118	x1971701000006102	Me	Mental & behav dis due to use opioids: resid & late-onset psychot dis, dementia	-	Def	<50	<50	<50	100%	73.4	100%
A	x2000501000006119	x2000501000006103	Me	Uses other opioids on top of substitution therapy	-	Def	<50	<50	<50	0%	33.5	100%
A	x2000491000006110	x2000491000006106	Me	Does not use opioids on top of substitution therapy	-	Def	<50	<50	<50	0%	48.1	100%
A	x1715481000000114	x768691000000103	Me	Drug addiction maintenance therapy - naltrexone	-	Def	<50	<50	<50	0%	35.8	64%
A	x397161000006110	x943071000000104	Me	[X]Men & beh dis due opioids: resid & late-onset psychot dis	-	Def	<50	<50	<50	0%	45.4	100%
A	x968931000006110	x968931000006106	Me	Misuse of Methadone linctus	-	Def	<50	<50	<50	50%	40.1	75%
A	x969201000006115	x969201000006104	Me	Misuse of Papaveretum	-	Def	<50	<50	<50	100%	73.4	100%
A	x1976611000006118	x1976611000006102	Me	Mental and behav dis due to use opioids: dependence syndr, continuous use	-	Def	<50	<50	<50	0%	43.1	88%
A	x969341000006113	x969341000006109	Me	Misuse of Nalbuphine	-	Def	<50	<50	<50	100%	73.4	100%
A	x1976441000006116	x1976441000006100	Me	Mental & behav dis due to use opioids: acute intoxication, with coma	-	Def	<50	<50	<50	100%	73.4	100%

Data-base	Medcode	ReadCode / SNOMED	Type	Term	Meth / bupe	Status	Number in database	Number in cohort	Dropped	% dropped	Median age (IQR)	% Male
G	x68989	x43VZ.00	Pr	Buprenorphine 2mg oral lyophilisates sugar free	b	Ex	<50	<50	<50	80%	47.1	44%
G	x76523	x5649SB	Pr	Methadone 1mg/ml oral solution (Teva UK Ltd)	m	Ex	-	-	-	-	-	-
G	x24361	x7B00200	Pr	Methadose 20mg/ml oral solution concentrate (Rosemont Pharmaceuticals Ltd)	m	Ex	<50	<50	<50	0%	45.1	100%
G	x24343	x23Z..00	Pr	Methadose 10mg/ml oral solution concentrate (Rosemont Pharmaceuticals Ltd)	m	Ex	<50	<50	<50	70%	42.7	54%
G	x29304	x2693.00	Pr	Physeptone 10mg/1ml solution for injection ampoules (Martindale Pharmaceuticals Ltd)	m	Ex	<50	<50	<50	50%	43.6	100%
G	x21337	x14A8.11	Pr	METHADONE 15 MG SUP	m	Ex	<50	<50	<50	50%	43.3	0%
G	x71711	xK534200	Pr	Busiete 10micrograms/hour transdermal patches (Teva UK Ltd)	b	Ex	<50	<50	<50	100%	74.0	0%
G	x60944	xZ375.00	Pr	Methadone 5mg capsules	m	Ex	<50	<50	<50	100%	39.3	100%
G	x71695	xSLD2.00	Pr	Prefibin 0.4mg sublingual tablets (Sandoz Ltd)	b	Ex	-	-	-	-	-	-
G	x74863	x9450L	Pr	Buprenorphine 400microgram sublingual tablets sugar free (Kent Pharmaceuticals Ltd)	b	Ex	-	-	-	-	-	-
G	x61100	xP51y.11	Pr	Tephine 400microgram sublingual tablets (Sandoz Ltd)	b	Ex	<50	<50	<50	0%	39.6	100%
G	x6547	x2B70.00	Pr	Buprenorphine 2mg sublingual tablets sugar free	b	Def	1935	1309	626	32%	36.6 (30.2-45.6)	65%
G	x33475	xS321200	Pr	Methadone 35mg/ml Injection	m	Ex	<50	<50	<50	100%	73.3	0%
G	x40212	x46TS.00	Pr	Buprenorphine 8mg sublingual tablets sugar free (Teva UK Ltd)	b	Ex	-	-	-	-	-	-
G	x7555	xK20..15	Pr	BuTrans 5micrograms/hour transdermal patches (Napp Pharmaceuticals Ltd)	b	Ex	51269	247	51022	100%	74.8 (61.1-84.0)	28%
G	x17671	x4322000	Pr	Methadone 50mg/1ml solution for injection ampoules	m	Ex	<50	<50	<50	60%	37.4	74%
G	x68988	x46PE.00	Pr	Buprenorphine 8mg oral lyophilisates sugar free	b	Ex	<50	<50	<50	90%	41.2	56%
G	x64155	x7015y00	Pr	Buprenorphine 400microgram sublingual tablets sugar free (Teva UK Ltd)	b	Ex	-	-	-	-	-	-
G	x67018	xBBD5.00	Pr	Buprenorphine 35micrograms/hour transdermal patches (A A H Pharmaceuticals Ltd)	b	Ex	<50	<50	<50	100%	76.4	0%
G	x74562	xK964 HA	Pr	Carlosafine 35micrograms/hour transdermal patches (Glenmark Pharmaceuticals Europe Ltd)	b	Ex	<50	<50	<50	100%	91.0	0%
G	x46578	xH321.00	Pr	Physeptone 20mg/2ml solution for injection ampoules (Martindale Pharmaceuticals Ltd)	m	Ex	-	-	-	-	-	-
G	x6056	x13H3.00	Pr	Buprenorphine 8mg sublingual tablets sugar free	b	Def	1226	833	393	32%	34.5 (29.1-41.0)	74%
G	x63788	xSD3z.00	Pr	Buprenorphine 1mg sublingual tablets sugar free	b	Ex	<50	<50	<50	80%	47.5	55%
G	x5322	x7E1..00	Pr	Physeptone 5mg tablets (Martindale Pharmaceuticals Ltd)	m	Ex	380	226	154	41%	38.1 (32.2-45.5)	68%
G	x50380	xSP35400	Pr	Subutex 2mg sublingual tablets (Lexon (UK) Ltd)	b	Ex	-	-	-	-	-	-
G	x33832	x133..00	Pr	Methadone 1mg/ml oral solution (Martindale Pharmaceuticals Ltd)	m	Def	103	0-10	100-110	100%	27.6 (23.3-33.9)	69%
G	x69243	xPB52z00	Pr	Bupeaze 52.5micrograms/hour transdermal patches (Dr Reddy's Laboratories (UK) Ltd)	b	Ex	<50	<50	<50	90%	63.5	33%
G	x30531	x7HOB000	Pr	Methadone 1mg/ml oral solution sugar free (Rosemont Pharmaceuticals Ltd)	m	Ex	<50	<50	<50	20%	36.3	60%
G	x62675	x461W.00	Pr	Buprenorphine 200microgram sublingual tablets sugar free (A A H Pharmaceuticals Ltd)	b	Ex	-	-	-	-	-	-
G	x12132	xS91..00	Pr	METHADONE 5 MG/ML INJ	m	Ex	<50	<50	<50	20%	28.5	71%
G	x68559	xU100000	Pr	Panitaz 10micrograms/hour transdermal patches (Dr Reddy's Laboratories (UK) Ltd)	b	Ex	<50	<50	<50	100%	60.7	33%
G	x72098	x66H5.00	Pr	Turgeon 35micrograms/hour transdermal patches (Teva UK Ltd)	b	Ex	<50	<50	<50	100%	54.2	0%
G	x22620	x2E3..00	Pr	PHYSEPTONE 2 MG LIN	m	Ex	-	-	-	-	-	-
G	x40211	x44LB.00	Pr	Buprenorphine 2mg sublingual tablets sugar free (Teva UK Ltd)	b	Ex	-	-	-	-	-	-
G	x38311	xSP22.00	Pr	Naloxone hc 2mg + 8mg Tablet	b	Ex	<50	<50	<50	0%	31.9	100%
G	x57454	xZ897K11	Pr	Prefibin 8mg sublingual tablets (Sandoz Ltd)	b	Ex	<50	<50	<50	0%	32.3	100%
G	x13031	xTJC2400	Pr	Subutex 0.4mg sublingual tablets (Indivior UK Ltd)	b	Def	961	783	178	19%	33.6 (27.6-39.4)	72%
G	x67342	xBB5U100	Pr	Methadone 50mg/1ml solution for injection ampoules (Alliance Healthcare (Distribution) Ltd)	m	Ex	-	-	-	-	-	-
G	x62776	xQ037.11	Pr	Buprenorphine 4mg sublingual tablets sugar free	b	Ex	<50	<50	<50	50%	36.6	73%
G	x37507	xBBM5.00	Pr	Physeptone 50mg/1ml solution for injection ampoules (Martindale Pharmaceuticals Ltd)	m	Ex	<50	<50	<50	0%	37.2	100%
G	x70461	xT328100	Pr	Bupramyl 5micrograms/hour transdermal patches (Mylan)	b	Ex	<50	<50	<50	100%	84.2	39%
G	x23158	x46QZ.00	Pr	Methadone 20mg/ml oral solution sugar free	m	Ex	<50	<50	<50	40%	39.8	74%
G	x32526	x14AA.00	Pr	METHADONE GREEN S/F	m	Ex	<50	<50	<50	70%	22.5	33%
G	x35170	x7NA5V00	Pr	Suboxone 2mg/500microgram sublingual tablets (Indivior UK Ltd)	b	Def	674	195	479	71%	35.9 (30.9-42.0)	69%
G	x6441	x26..00	Pr	Methadone 5mg tablets	m	Ex	1140	591	549	48%	41.4 (32.0-54.8)	60%
G	x75719	xY10 HC	Pr	Physeptone 50mg/2ml solution for injection ampoules (Martindale Pharmaceuticals Ltd)	m	Ex	-	-	-	-	-	-
G	x7236	x7C08400	Pr	Buprenorphine 10micrograms/hour transdermal patches	b	Ex	20432	200	20232	99%	72.4 (58.0-82.4)	30%
G	x70117	xS950200	Pr	Panitaz 20micrograms/hour transdermal patches (Dr Reddy's Laboratories (UK) Ltd)	b	Ex	<50	<50	<50	100%	74.3	13%
G	x73146	xAyu8B00	Pr	Prefibin 2mg sublingual tablets (Sandoz Ltd)	b	Ex	-	-	-	-	-	-
G	x66695	x7M26200	Pr	Buteac 20micrograms/hour transdermal patches (Qdem Pharmaceuticals Ltd)	b	Ex	1920	10-10	1910-1910	100%	71.4 (58.4-82.5)	32%
G	x37518	xC0A3.00	Pr	Methadone 35mg/3.5ml solution for injection ampoules	m	Ex	<50	<50	<50	0%	60.7	100%

Data-base	Medcode	ReadCode / SNOMED	Type	Term	Meth / bupe	Status	Number in database	Number in cohort	Dropped	% dropped	Median age (IQR)	% Male
G	x24584	x25D.11	Pr	Methadone 50mg/2ml solution for injection ampoules	m	Ex	<50	<50	<50	80%	48.6	63%
G	x66921	x7A6H400	Pr	Methadone 1mg/ml oral solution sugar free (Waymade Healthcare Plc)	m	Ex	-	-	-	-	-	-
G	x62874	x2IB2.00	Pr	Buprenorphine 6mg sublingual tablets sugar free	b	Ex	<50	<50	<50	40%	41.8	75%
G	x70065	x0812.00	Pr	Espranor 2mg oral lyophilisates (Martindale Pharmaceuticals Ltd)	b	Ex	<50	<50	<50	100%	33.6	43%
G	x66463	xPG1wz00	Pr	Buprenorphine 15micrograms/hour transdermal patches	b	Ex	387	0-10	380-390	100%	74.8 (60.6-83.6)	21%
G	x54806	x42N6.00	Pr	Transtec 52.5micrograms/hour transdermal patches (DE Pharmaceuticals)	b	Ex	-	-	-	-	-	-
G	x70631	x8BA0.00	Pr	Relevtec 52.5micrograms/hour transdermal patches (Sandoz Ltd)	b	Ex	<50	<50	<50	100%	59.0	42%
G	x68196	xSJB1.00	Pr	Reletrans 15micrograms/hour transdermal patches (Sandoz Ltd)	b	Ex	217	0-10	210-220	100%	75.4 (63.7-85.1)	25%
G	x68959	xJ23z300	Pr	Methadone 20mg/5ml oral solution	m	Ex	<50	<50	<50	100%	32.1	0%
G	x62708	xS49Ez00	Pr	Methadone hydrochloride powder	m	Ex	-	-	-	-	-	-
G	x71410	x2I95.00	Pr	Suboxone 8mg/2mg sublingual tablets (Mawdsley-Brooks & Company Ltd)	b	Ex	<50	<50	<50	100%	34.2	67%
G	x69942	xZM53N00	Pr	Buprenorphine 400microgram sublingual tablets sugar free (Phoenix Healthcare Distribution Ltd)	b	Ex	-	-	-	-	-	-
G	x63640	xF461B11	Pr	Subutex 2mg sublingual tablets (DE Pharmaceuticals)	b	Ex	-	-	-	-	-	-
G	x59473	x0AH5.00	Pr	Hapoctasin 52.5micrograms/hour transdermal patches (Actavis UK Ltd)	b	Ex	<50	<50	<50	100%	62.4	37%
G	x26277	x7B38400	Pr	Physeptone 1mg/ml mixture (Martindale Pharmaceuticals Ltd)	m	Def	231	133	98	42%	37.7 (32.4-44.5)	68%
G	x71310	x7M23100	Pr	Bupramyl 20micrograms/hour transdermal patches (Mylan)	b	Ex	<50	<50	<50	100%	71.7	0%
G	x35169	x7646y00	Pr	Suboxone 8mg/2mg sublingual tablets (Indivior UK Ltd)	b	Def	630	198	432	69%	36.0 (31.1-41.8)	70%
G	x39437	x7A4A300	Pr	Eptadone 1mg/ml oral solution (Dee Pharmaceuticals Ltd)	m	Ex	<50	<50	<50	0%	49.1	0%
G	x70124	xS499700	Pr	Relevtec 70micrograms/hour transdermal patches (Sandoz Ltd)	b	Ex	<50	<50	<50	100%	77.3	13%
G	x70066	x0449.00	Pr	Espranor 8mg oral lyophilisates (Martindale Pharmaceuticals Ltd)	b	Ex	<50	<50	<50	100%	33.7	44%
G	x41608	x7B27600	Pr	Methadone 1mg/ml oral solution (Rosemont Pharmaceuticals Ltd)	m	Ex	<50	<50	<50	100%	38.6	100%
G	x68172	xZ121700	Pr	Reletrans 20micrograms/hour transdermal patches (Sandoz Ltd)	b	Ex	305	0-0	300-310	100%	71.7 (61.1-82.7)	28%
G	x35681	x64U5.00	Pr	Buprenorphine 2mg / Naloxone 500microgram sublingual tablets sugar free	b	Def	77	30-40	40-50	50%	38.1 (31.3-48.3)	66%
G	x71630	xSH42.11	Pr	Natzon 0.4mg sublingual tablets (Morningside Healthcare Ltd)	b	Ex	<50	<50	<50	100%	57.7	100%
G	x59295	x7313413	Pr	Methadone 100mg capsules	m	Ex	<50	<50	<50	100%	27.1	0%
G	x69053	xA702.00	Pr	Pinadone methadone 1mg/ml Oral solution sugar free (Pinewood Healthcare)	m	Ex	<50	<50	<50	100%	19.5	100%
G	x60943	xZ134100	Pr	Transtec 35micrograms/hour transdermal patches (Sigma Pharmaceuticals Plc)	b	Ex	<50	<50	<50	100%	49.2	0%
G	x68889	xBBE4.00	Pr	Sevodyne 10micrograms/hour transdermal patches (Aspire Pharma Ltd)	b	Ex	<50	<50	<50	100%	79.1	33%
G	x32237	x13pP.00	Pr	Methex 1mg/ml Mixture (Generics (UK) Ltd)	m	Ex	-	-	-	-	-	-
G	x29769	xSP09300	Pr	Methadone 2mg/5ml Oral solution (Martindale Pharmaceuticals Ltd)	m	Ex	<50	<50	<50	100%	67.1	100%
G	x35682	xC390.11	Pr	Buprenorphine 8mg / Naloxone 2mg sublingual tablets sugar free	b	Def	58	30-30	20-30	50%	39.7 (32.1-44.6)	76%
G	x7334	xN06z511	Pr	Buprenorphine 5micrograms/hour transdermal patches	b	Ex	28996	201	28795	99%	74.4 (60.6-83.8)	27%
G	x40473	x7B42.00	Pr	Buprenorphine 300micrograms/1ml solution for injection ampoules	b	Ex	<50	<50	<50	80%	77.0	17%
G	x70267	xPF5y600	Pr	Methadone 15mg/5ml oral solution	m	Ex	<50	<50	<50	100%	52.5	0%
G	x58766	x7J0z.00	Pr	BuTrans 10micrograms/hour transdermal patches (Waymade Healthcare Plc)	b	Ex	<50	<50	<50	100%	76.8	0%
G	x67356	xJ111400	Pr	Transtec 70micrograms/hour transdermal patches (Lexon (UK) Ltd)	b	Ex	<50	<50	<50	100%	39.8	0%
G	x14086	x62G8.00	Pr	Methadone 10mg/ml Injection	m	Ex	148	100-110	40-50	30%	34.4 (28.7-42.3)	68%
G	x66689	xU602316	Pr	Buteac 5micrograms/hour transdermal patches (Qdem Pharmaceuticals Ltd)	b	Ex	6274	10-20	6260-6270	100%	77.2 (64.3-85.8)	28%
G	x6181	xH061400	Pr	Transtec 70micrograms/hour transdermal patches (Napp Pharmaceuticals Ltd)	b	Ex	1244	40-40	1200-1210	100%	63.6 (50.5-76.0)	37%
G	x396	xN05.11	Pr	Buprenorphine 200microgram sublingual tablets sugar free	b	Ex	12116	869	11247	93%	56.1 (43.0-69.5)	38%
G	x11584	xZLD3B00	Pr	Buprenorphine 70micrograms/hour transdermal patches	b	Ex	1291	72	1219	94%	65.3 (51.6-77.6)	35%
G	x6210	x1517.11	Pr	Subutex 8mg sublingual tablets (Indivior UK Ltd)	b	Def	2120	1717	403	19%	31.9 (26.5-37.8)	75%
G	x320	x7M37100	Pr	Buprenorphine HCl 300micrograms injection	b	Ex	<50	<50	<50	90%	50.4	31%
G	x70464	xN081500	Pr	Subutex 2mg sublingual tablets (Waymade Healthcare Plc)	b	Ex	<50	<50	<50	100%	37.5	100%
G	x68910	xZRVV900	Pr	Suboxone 16mg/4mg sublingual tablets (Indivior UK Ltd)	b	Ex	<50	<50	<50	100%	41.4	76%
G	x60053	xByu.00	Pr	Tephine 200microgram sublingual tablets (Sandoz Ltd)	b	Ex	<50	<50	<50	80%	58.8	50%
G	x6917	xS336.00	Pr	Buprenorphine 52.5micrograms/hour transdermal patches	b	Ex	2440	99	2341	96%	65.4 (51.9-77.6)	34%
G	x6040	xN226500	Pr	Transtec 52.5micrograms/hour transdermal patches (Napp Pharmaceuticals Ltd)	b	Ex	2424	55	2369	98%	63.6 (51.0-76.6)	36%
G	x24414	x9DG0.00	Pr	TEMGESIC	b	Ex	-	-	-	-	-	-
G	x41720	xSD01.11	Pr	Methadone 1mg/ml Mixture (Macarthy Medical Ltd)	m	Ex	<50	<50	<50	100%	32.1	100%
G	x59146	x9832.00	Pr	BuTrans 20micrograms/hour transdermal patches (Waymade Healthcare Plc)	b	Ex	<50	<50	<50	100%	60.0	0%

Data-base	Medcode	ReadCode / SNOMED	Type	Term	Meth / bupe	Status	Number in database	Number in cohort	Dropped	% dropped	Median age (IQR)	% Male
G	x55825	x7A12y00	Pr	Methadone 1mg/ml oral solution sugar free (Thornton & Ross Ltd)	m	Def	52	50-50	0-10	0%	28.1 (23.8-33.1)	85%
G	x69795	xPF01800	Pr	Prenotrix 35micrograms/hour transdermal patches (Genesis Pharmaceuticals Ltd)	b	Ex	<50	<50	<50	100%	86.3	100%
G	x3522	xTE53100	Pr	Temgesic 200microgram sublingual tablets (Indivior UK Ltd)	b	Ex	11791	271	11520	98%	53.8 (41.9-67.2)	40%
G	x7238	x7H1B200	Pr	Buprenorphine 20micrograms/hour transdermal patches	b	Ex	8878	137	8741	99%	70.1 (55.3-80.7)	31%
G	x72160	x4I3G.00	Pr	Turgeon 52.5micrograms/hour transdermal patches (Teva UK Ltd)	b	Ex	<50	<50	<50	100%	69.8	0%
G	x70460	x7B10000	Pr	Bupramyl 10micrograms/hour transdermal patches (Mylan)	b	Ex	<50	<50	<50	100%	73.6	33%
G	x59618	xA862.00	Pr	Transtec 35micrograms/hour transdermal patches (Mawdsley-Brooks & Company Ltd)	b	Ex	-	-	-	-	-	-
G	x68402	x7A33C00	Pr	Panitaz 5micrograms/hour transdermal patches (Dr Reddy's Laboratories (UK) Ltd)	b	Ex	<50	<50	<50	100%	72.6	14%
G	x28861	xL398500	Pr	METHADONE 50 MG SUP	m	Ex	<50	<50	<50	0%	26.7	100%
G	x70283	xZR6v100	Pr	Buprenorphine 16mg / Naloxone 4mg sublingual tablets sugar free	b	Ex	<50	<50	<50	100%	31.6	100%
G	x67901	xH24y100	Pr	Transtec 52.5micrograms/hour transdermal patches (Lexon (UK) Ltd)	b	Ex	-	-	-	-	-	-
G	x64847	x9883.00	Pr	Gabup 8mg sublingual tablets (Martindale Pharmaceuticals Ltd)	b	Ex	<50	<50	<50	0%	29.8	100%
G	x24446	xG63y100	Pr	METHADONE 100 MG SUP	m	Ex	-	-	-	-	-	-
G	x5211	x8771.00	Pr	Methadone 2mg/5ml linctus	m	Ex	609	51	558	92%	66.7 (55.3-75.4)	53%
G	x68848	xN07y400	Pr	Buplast 52.5micrograms/hour transdermal patches (Mylan)	b	Ex	<50	<50	<50	100%	82.3	0%
G	x35269	x94Z0.00	Pr	Temgesic 300micrograms/1ml solution for injection ampoules (Indivior UK Ltd)	b	Ex	<50	<50	<50	80%	65.6	20%
G	x73406	x7614200	Pr	Bunov 5micrograms/hour transdermal patches (Glenmark Pharmaceuticals Europe Ltd)	b	Ex	-	-	-	-	-	-
G	x33068	x0421.00	Pr	Methadone 10mg/1ml solution for injection ampoules	m	Def	89	30-40	50-60	60%	47.8 (39.7-60.7)	65%
G	x23948	xPCy2000	Pr	METHADONE 20 MG SUP	m	Ex	<50	<50	<50	0%	27.2	78%
G	x66280	x0C59.00	Pr	BuTrans 15micrograms/hour transdermal patches (Napp Pharmaceuticals Ltd)	b	Ex	703	0-10	690-700	100%	74.5 (59.4-82.9)	29%
G	x68472	xZ622111	Pr	Prenotrix 52.5micrograms/hour transdermal patches (Genesis Pharmaceuticals Ltd)	b	Ex	<50	<50	<50	100%	56.3	50%
G	x25046	x2272.00	Pr	Methadone diluent Liquid	m	Ex	<50	<50	<50	70%	31.7	78%
G	x60170	xN090W00	Pr	Hapoctasin 35micrograms/hour transdermal patches (Actavis UK Ltd)	b	Ex	91	0-10	90-90	100%	63.8 (54.8-81.6)	34%
G	x24192	xK57y300	Pr	TEMGESIC	b	Ex	-	-	-	-	-	-
G	x17896	xJ053.00	Pr	Physeptone 10mg/ml Injection (Martindale Pharmaceuticals Ltd)	m	Ex	<50	<50	<50	20%	37.2	67%
G	x2952	xK310111	Pr	Methadone 1mg/ml oral solution	m	Def	11302	6606	4696	42%	31.5 (26.0-38.2)	69%
G	x43766	xZ1G2121	Pr	Eptadone 5mg/ml oral solution (Dee Pharmaceuticals Ltd)	m	Ex	<50	<50	<50	0%	50.5	0%
G	x68890	xZC26500	Pr	Sevodyne 5micrograms/hour transdermal patches (Aspire Pharma Ltd)	b	Ex	<50	<50	<50	100%	79.8	42%
G	x68888	xP65..11	Pr	Sevodyne 20micrograms/hour transdermal patches (Aspire Pharma Ltd)	b	Ex	<50	<50	<50	100%	71.5	33%
G	x3064	x7E04.12	Pr	Buprenorphine 400microgram sublingual tablets sugar free	b	Def	2581	1570	1011	39%	47.9 (36.8-62.1)	50%
G	x47706	x7M14.00	Pr	Methadone 1mg/ml oral solution sugar free (Martindale Pharmaceuticals Ltd)	m	Def	93	0-0	90-100	100%	25.9 (23.0-31.8)	67%
G	x69254	xL264200	Pr	Buplast 35micrograms/hour transdermal patches (Mylan)	b	Ex	<50	<50	<50	100%	85.9	0%
G	x59392	x7319.00	Pr	Hapoctasin 70micrograms/hour transdermal patches (Actavis UK Ltd)	b	Ex	<50	<50	<50	90%	58.8	24%
G	x26801	x04A7.00	Pr	Methadone colourant for Liquid	m	Ex	<50	<50	<50	60%	30.4	71%
G	x64463	xS5J..00	Pr	Methadone 30mg capsules	m	Ex	-	-	-	-	-	-
G	x5936	x1CA2.00	Pr	Transtec 35micrograms/hour transdermal patches (Napp Pharmaceuticals Ltd)	b	Ex	5714	83	5631	99%	66.8 (52.8-78.5)	33%
G	x7457	xG576.00	Pr	Temgesic 0.3mg/ml Injection (Reckitt Benckiser Healthcare (UK) Ltd)	b	Ex	221	0-10	210-220	100%	50.8 (39.2-65.2)	42%
G	x36436	x3318.11	Pr	Methadone 50mg/5ml solution for injection ampoules	m	Ex	<50	<50	<50	60%	48.0	60%
G	x13300	xQ477.00	Pr	BuTrans 20micrograms/hour transdermal patches (Napp Pharmaceuticals Ltd)	b	Ex	13174	145	13029	99%	69.9 (55.5-80.8)	31%
G	x9728	x1DCZ.00	Pr	Methadone 1mg/ml oral solution sugar free	m	Def	6265	3073	3192	51%	33.2 (27.9-39.5)	66%
G	x58273	xY10 .B	Pr	Buprenorphine 2mg sublingual tablets sugar free (A A H Pharmaceuticals Ltd)	b	Ex	-	-	-	-	-	-
G	x8017	xN013.00	Pr	Temgesic 400microgram sublingual tablets (Indivior UK Ltd)	b	Ex	1459	145	1314	90%	52.4 (41.7-64.9)	47%
G	x33380	x63C2.00	Pr	Methadose diluent oral solution sugar free (Rosemont Pharmaceuticals Ltd)	m	Ex	<50	<50	<50	70%	36.5	67%
G	x75334	xK914 EB	Pr	Bunov 10micrograms/hour transdermal patches (Glenmark Pharmaceuticals Europe Ltd)	b	Ex	-	-	-	-	-	-
G	x29911	xS4F..00	Pr	Methadone 2mg/5ml linctus (Thornton & Ross Ltd)	m	Ex	<50	<50	<50	100%	71.7	0%
G	x68743	xC30..00	Pr	Bupeaze 35micrograms/hour transdermal patches (Dr Reddy's Laboratories (UK) Ltd)	b	Ex	<50	<50	<50	100%	68.9	10%
G	x69315	xJ09y400	Pr	Buteac 15micrograms/hour transdermal patches (Qdem Pharmaceuticals Ltd)	b	Ex	839	0-10	830-840	100%	72.9 (58.8-82.8)	27%
G	x23947	x7M2C200	Pr	METHADONE 30 MG SUP	m	Ex	<50	<50	<50	0%	24.6	100%
G	x63077	xQ00y.00	Pr	Methadone 1mg/5ml oral suspension	m	Ex	<50	<50	<50	100%	86.2	100%
G	x21562	xH121200	Pr	Physeptone 1mg/ml oral solution sugar free (Martindale Pharmaceuticals Ltd)	m	Def	488	335	153	31%	35.9 (30.7-43.0)	69%
G	x68167	xT0y0z00	Pr	Reletrans 5micrograms/hour transdermal patches (Sandoz Ltd)	b	Ex	890	0-10	880-890	100%	80.8 (70.1-87.7)	24%

Data-base	Medcode	ReadCode / SNOMED	Type	Term	Meth / bupe	Status	Number in database	Number in cohort	Dropped	% dropped	Median age (IQR)	% Male
G	x66470	xZV12300	Pr	Buteac 10micrograms/hour transdermal patches (Qdem Pharmaceuticals Ltd)	b	Ex	4503	10-20	4480-4490	100%	75.2 (61.4-84.6)	28%
G	x10077	x7K6P100	Pr	Subutex 2mg sublingual tablets (Indivior UK Ltd)	b	Def	2663	2164	499	19%	31.5 (26.2-37.5)	72%
G	x73545	xJ045500	Pr	Busiete 20micrograms/hour transdermal patches (Teva UK Ltd)	b	Ex	<50	<50	<50	100%	73.7	0%
G	x56671	xTGy2.00	Pr	BuTrans 5micrograms/hour transdermal patches (Waymade Healthcare Plc)	b	Ex	<50	<50	<50	100%	79.4	0%
G	x43260	x46HZ.00	Pr	Methadone Oral solution	m	Ex	<50	<50	<50	100%	35.1	83%
G	x11722	x7K6aD00	Pr	Methadone 10mg/ml oral solution sugar free	m	Def	195	109	86	44%	44.8 (36.1-55.3)	60%
G	x23769	xPA13.00	Pr	METHADONE 25 MG SUP	m	Ex	<50	<50	<50	0%	35.2	100%
G	x62969	x7J16400	Pr	Buprenorphine 8mg sublingual tablets sugar free (Zentiva)	b	Ex	-	-	-	-	-	-
G	x28328	xZLF3100	Pr	Metharose 1mg/ml oral solution sugar free (Rosemont Pharmaceuticals Ltd)	m	Ex	<50	<50	<50	60%	32.1	33%
G	x74337	xK691 TB	Pr	Busiete 5micrograms/hour transdermal patches (Teva UK Ltd)	b	Ex	<50	<50	<50	100%	45.8	0%
G	x68479	xBBc7.11	Pr	Bupeaze 70micrograms/hour transdermal patches (Dr Reddy's Laboratories (UK) Ltd)	b	Ex	<50	<50	<50	100%	68.9	30%
G	x24440	xF410500	Pr	Methodex 1mg/ml Mixture (Link Pharmaceuticals Ltd)	m	Ex	<50	<50	<50	0%	27.4	0%
G	x68241	x44uO.00	Pr	Reletrans 10micrograms/hour transdermal patches (Sandoz Ltd)	b	Ex	656	0-10	650-660	100%	75.8 (63.7-84.8)	25%
G	x42074	x7K50200	Pr	Naloxone hc 500micrograms + 2mg Tablet	b	Ex	<50	<50	<50	0%	33.8	100%
G	x36994	x3983.00	Pr	Methadone 5mg/ml oral solution	m	Ex	<50	<50	<50	40%	42.9	48%
G	x35506	xZX11300	Pr	Methadone 20mg/2ml solution for injection ampoules	m	Ex	<50	<50	<50	90%	58.2	40%
G	x15449	x8B3C.00	Pr	METHADONE 40 MG SUP	m	Ex	<50	<50	<50	0%	29.8	50%
G	x6879	xA57y111	Pr	Buprenorphine 35micrograms/hour transdermal patches	b	Ex	5953	158	5795	97%	67.4 (53.6-79.0)	31%
G	x10205	xZG9..00	Pr	BuTrans 10micrograms/hour transdermal patches (Napp Pharmaceuticals Ltd)	b	Ex	33419	232	33187	99%	72.5 (58.4-82.5)	30%
G	x59970	x0E29.12	Pr	Buprenorphine 2mg sublingual tablets sugar free (Actavis UK Ltd)	b	Ex	-	-	-	-	-	-
G	x65157	x6744.00	Pr	Buprenorphine 2mg sublingual tablets sugar free (Sigma Pharmaceuticals Plc)	b	Ex	-	-	-	-	-	-
G	x70139	xP401300	Pr	Relevtec 35micrograms/hour transdermal patches (Sandoz Ltd)	b	Ex	<50	<50	<50	100%	75.8	42%
G	x111551	x1V33.00	Me	Groin injector	-	Prob	<50	<50	<50	100%	36.9	100%
G	x106705	x1V3A.00	Me	Does not share drug injection equipment	-	Prob	<50	<50	<50	50%	38.7	100%
G	x107780	x1V32.00	Me	Neck injector	-	Prob	<50	<50	<50	100%	49.9	0%
G	x95957	x13cN.00	Me	Has never shared drug injection equipment	-	Prob	<50	<50	<50	30%	30.3	89%
G	x97000	x1V3..00	Me	Drug injection behaviour	-	Prob	<50	<50	<50	80%	42.1	67%
G	x27960	xE240300	Me	Opioid dependence in remission	-	Def	89	60-70	20-30	30%	31.1 (25.9-40.1)	76%
G	x52451	xE248300	Me	Combined opioid with other drug dependence in remission	-	Def	<50	<50	<50	50%	30.5	50%
G	x86771	x1T13.00	Me	Previous history of methadone misuse	-	Def	<50	<50	<50	30%	36.7	56%
G	x88372	x1T02.00	Me	Previous history of heroin misuse	-	Def	188	122	66	35%	31.6 (26.2-37.6)	63%
G	x95953	xE255300	Me	Nondependent opioid abuse in remission	-	Def	-	-	-	-	-	-
G	x689	xE240.11	Me	Heroin dependence	-	Def	14896	11319	3577	24%	26.7 (22.0-32.5)	71%
G	x4564	xEu11212	Me	[X]Heroin addiction	-	Def	10501	7715	2786	27%	26.4 (22.0-32.1)	71%
G	x6111	x8B23.11	Me	Drug addictn therap-methadone	-	Def	11133	5952	5181	47%	31.5 (26.0-37.9)	67%
G	x10538	xEu11211	Me	[X]Drug addiction - opioids	-	Def	3287	2295	992	30%	30.2 (24.7-37.3)	69%
G	x16243	xE240.00	Me	Opioid type drug dependence	-	Def	7602	5038	2564	34%	29.8 (24.0-37.0)	69%
G	x16374	xE240.12	Me	Methadone dependence	-	Def	2215	1645	570	26%	32.1 (26.5-38.2)	67%
G	x20962	xE240200	Me	Episodic opioid dependence	-	Def	67	30-40	20-30	40%	28.8 (22.5-33.4)	66%
G	x30711	xZV11500	Me	[V]Personal history of drug abuse by injection	-	Prob	-	-	-	-	-	-
G	x24441	xE240200	Me	Opioid drug dependence NOS	-	Def	2442	1069	1373	56%	33.0 (26.2-40.8)	66%
G	x25527	xEu11311	Me	[X]Cold turkey, opiate withdrawal	-	Def	695	395	300	43%	34.4 (27.2-47.2)	58%
G	x26061	xE248.00	Me	Combined opioid with other drug dependence	-	Def	165	120-130	40-50	20%	30.2 (24.7-35.6)	72%
G	x26831	xE255.00	Me	Nondependent opioid abuse	-	Def	204	136	68	33%	27.2 (23.0-32.5)	67%
G	x27652	xEu11700	Me	[X]Men & beh dis due opioids: resid & late-onset psychot dis	-	Def	<50	<50	<50	40%	34.2	60%
G	x28976	x8B2N.00	Me	Drug addiction detoxification therapy - methadone	-	Def	2040	1254	786	39%	32.1 (26.8-38.8)	67%
G	x30565	x146C.00	Me	Failed heroin detoxification	-	Def	576	419	157	27%	29.6 (24.7-34.8)	72%
G	x30694	x8B2P.00	Me	Drug addiction maintenance therapy - methadone	-	Def	2492	1094	1398	56%	35.0 (29.4-41.8)	65%
G	x32804	xE240.14	Me	Opium dependence	-	Def	168	120-130	40-40	20%	32.4 (26.4-41.3)	79%
G	x34249	xEu11200	Me	[X]Mental and behav dis due to use opioids: dependence syndr	-	Def	443	249	194	44%	28.6 (23.0-35.5)	72%
G	x36241	xEu11300	Me	[X]Mental and behav dis due to use opioids: withdrawal state	-	Def	58	20-30	30-30	50%	34.8 (26.6-41.3)	50%

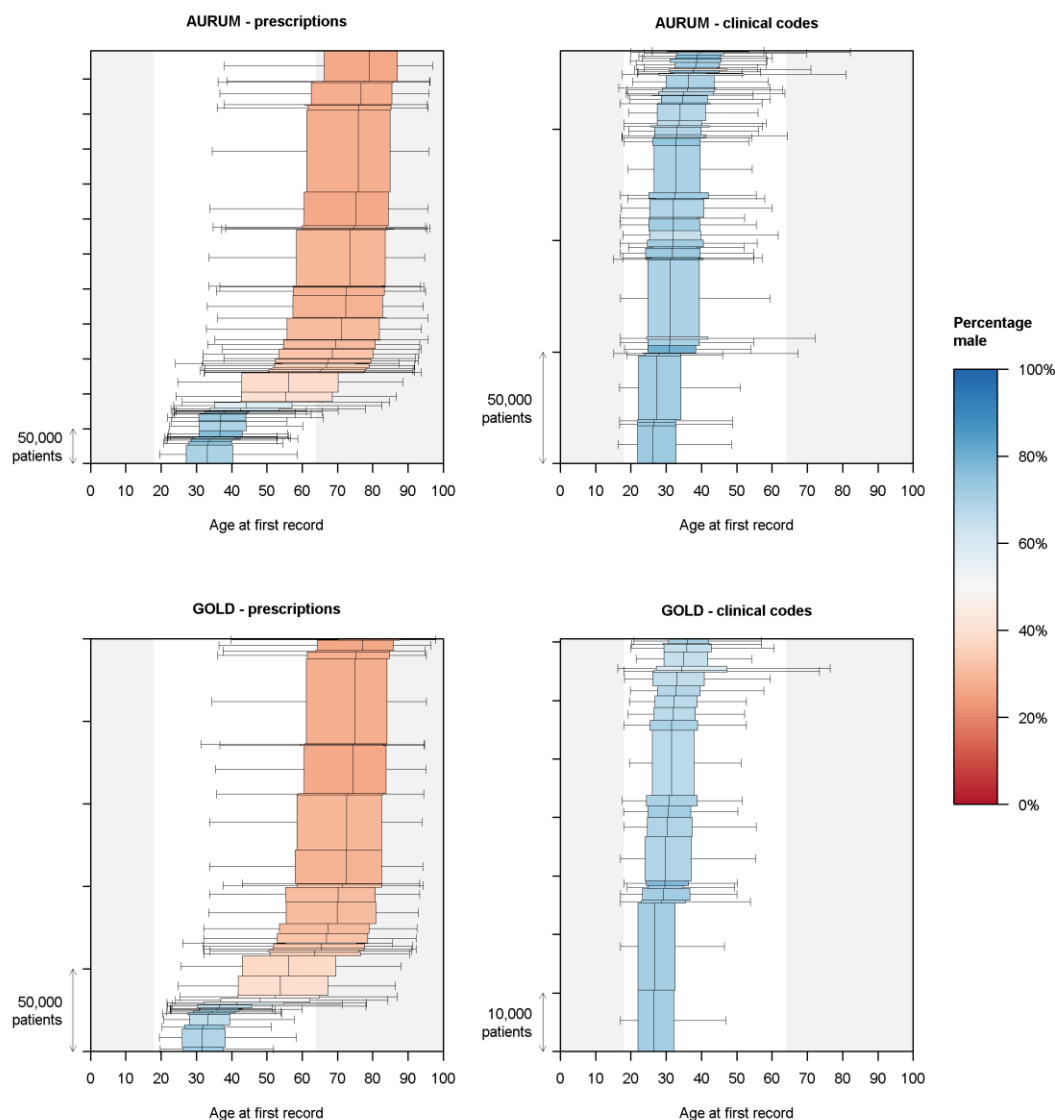
Data-base	Medcode	ReadCode / SNOMED	Type	Term	Meth / bupe	Status	Number in database	Number in cohort	Dropped	% dropped	Median age (IQR)	% Male
G	x37568	xEu11100	Me	[X]Mental and behav dis due to use of opioids: harmful use	-	Def	<50	<50	<50	40%	31.7	74%
G	x38034	xE240000	Me	Unspecified opioid dependence	-	Def	121	64	57	47%	29.8 (25.6-36.5)	66%
G	x43075	xE240100	Me	Continuous opioid dependence	-	Def	195	92	103	53%	28.0 (22.3-33.7)	70%
G	x47083	x8B2M.00	Me	Buprenorphine maintenance therapy	-	Def	192	109	83	43%	36.4 (30.8-42.8)	70%
G	x47335	xEu11.00	Me	[X]Mental and behavioural disorders due to use of opioids	-	Def	199	160-170	30-40	20%	35.6 (28.7-44.0)	72%
G	x50964	xEu11500	Me	[X]Mental & behav dis due to use opioids: psychotic disorder	-	Def	<50	<50	<50	40%	33.4	76%
G	x51052	x8B2R.00	Me	Drug addiction detoxification therapy - buprenorphine	-	Def	126	74	52	41%	35.0 (29.6-42.6)	70%
G	x52739	xEu11y00	Me	[X]Men & behav dis due to use opioids: oth men & behav dis	-	Def	<50	<50	<50	50%	37.5	50%
G	x56194	xE248000	Me	Combined opioid with other drug dependence, unspecified	-	Def	<50	<50	<50	50%	29.3	69%
G	x58731	xE255100	Me	Nondependent opioid abuse, continuous	-	Def	<50	<50	<50	30%	42.3	67%
G	x60355	xZ1Q6200	Me	Methadone maintenance	-	Def	173	95	78	45%	36.5 (30.9-43.7)	70%
G	x64265	xE248100	Me	Combined opioid with other drug dependence, continuous	-	Def	<50	<50	<50	40%	31.1	94%
G	x64277	xE248200	Me	Combined opioid with other drug dependence, episodic	-	Def	<50	<50	<50	40%	31.4	86%
G	x64382	xE255200	Me	Nondependent opioid abuse, episodic	-	Def	<50	<50	<50	30%	28.0	82%
G	x69508	xE255z00	Me	Nondependent opioid abuse NOS	-	Def	<50	<50	<50	80%	24.8	60%
G	x73737	xE248z00	Me	Combined opioid with other drug dependence NOS	-	Def	<50	<50	<50	80%	29.4	67%
G	x82479	x1T0..00	Me	H/O heroin misuse	-	Def	1690	1113	577	34%	31.6 (25.4-38.9)	70%
G	x85097	x1T1..00	Me	H/O methadone misuse	-	Def	273	210	63	23%	35.8 (29.0-42.3)	65%
G	x85953	x1TF..00	Me	Does not use heroin on top of substitution therapy	-	Def	<50	<50	<50	10%	36.1	81%
G	x86002	x1T00.00	Me	H/O daily heroin misuse	-	Def	248	172	76	31%	31.4 (25.5-39.4)	72%
G	x86036	x1TD..00	Me	H/O opiate misuse	-	Def	1176	793	383	33%	35.8 (29.3-42.8)	65%
G	x86041	x1TE..00	Me	Uses heroin on top of substitution therapy	-	Def	157	100-110	40-50	30%	35.6 (29.8-40.8)	69%
G	x88760	x1TD0.00	Me	H/O daily opiate misuse	-	Def	97	60-70	20-30	30%	35.9 (29.8-43.5)	56%
G	x89145	x1T03.00	Me	H/O infrequent heroin misuse	-	Def	<50	<50	<50	20%	37.1	62%
G	x90198	x8BE0.00	Me	Reinduction to methadone maintenance therapy	-	Def	52	30-40	10-20	30%	34.2 (27.1-39.6)	62%
G	x91029	x1TD2.00	Me	H/O infrequent opiate misuse	-	Def	<50	<50	<50	30%	39.5	57%
G	x91256	x1TD3.00	Me	Previous history of opiate misuse	-	Def	105	70-80	30-30	30%	35.7 (29.7-43.0)	68%
G	x91801	xEu11z00	Me	[X]Ment & behav dis due use opioids: unsp ment & behav dis	-	Def	<50	<50	<50	60%	33.6	88%
G	x92404	x1T10.00	Me	H/O daily methadone misuse	-	Def	<50	<50	<50	20%	33.4	68%
G	x93109	x1T11.00	Me	H/O weekly methadone misuse	-	Def	<50	<50	<50	0%	31.6	80%
G	x93554	x1T01.00	Me	H/O weekly heroin misuse	-	Def	<50	<50	<50	20%	35.5	82%
G	x93980	x8B2S.00	Me	Opioid agonist substitution therapy	-	Def	<50	<50	<50	30%	38.7	65%
G	x95460	xZ1Q6214	Me	Heroin maintenance	-	Def	<50	<50	<50	0%	26.6	100%
G	x96081	x8BE1.00	Me	Reinduction to buprenorphine maintenance therapy	-	Def	<50	<50	<50	0%	34.9	100%
G	x96925	x1V65.00	Me	Heroin misuse	-	Def	1773	1017	756	43%	30.9 (24.4-38.8)	70%
G	x100632	xZ1Q6212	Me	Methadone therapy	-	Def	<50	<50	<50	20%	37.3	73%
G	x101377	x1TD1.00	Me	H/O weekly opiate misuse	-	Def	<50	<50	<50	30%	49.0	67%
G	x103991	xEu11600	Me	[X]Mental and behav dis due to use opioids: amnesic syndrome	-	Def	<50	<50	<50	0%	48.2	100%
G	x106342	x1T12.00	Me	H/O infrequent methadone misuse	-	Def	<50	<50	<50	50%	33.3	100%
G	x108251	x66c4.00	Me	Opioid substitution therapy monitoring	-	Def	<50	<50	<50	60%	43.5	54%
G	x43487	x8B2Q.00	Me	Drug addiction maintenance therapy - buprenorphine	-	Def	218	170-180	40-50	20%	35.0 (29.9-40.7)	75%
G	x97488	xEu11400	Me	[X]Men & behav dis due opioid: withdrawal state with delirium	-	Def	<50	<50	<50	30%	26.1	67%
G	x42456	xEu11000	Me	[X]Mental & behav dis due to use opioids: acute intoxication	-	Def	<50	<50	<50	60%	29.4	59%
G	x28710	xU205.11	Me	[X]Overdose - heroin	-	Prob	749	270	479	64%	29.6 (24.2-36.4)	78%
G	x68327	x13r3.00	Me	Abstinent from drug misuse on maintenance replacement	-	Prob	73	30-30	40-50	60%	46.4 (37.4-50.5)	73%
G	x37527	xTJ50.00	Me	Adverse reaction to heroin, diamorphine	-	Prob	<50	<50	<50	70%	34.7	57%
G	x109966	x8B23100	Me	Drug addiction maintenance therapy - lofexidine	-	Def	<50	<50	<50	0%	45.4	100%
G	x109730	x8B23000	Me	Drug addiction maintenance therapy - naltrexone	-	Def	<50	<50	<50	30%	38.1	70%
G	x20458	xSL50100	Me	Heroin poisoning	-	Prob	-	-	-	-	-	-
G	x22079	x13c0.00	Me	Injecting drug user	-	Prob	1949	580	1369	70%	30.5 (24.7-36.9)	72%
G	x51334	xU1A5.11	Me	[X]Accidental poisoning with heroin	-	Prob	-	-	-	-	-	-

Data-base	Medcode	ReadCode / SNOMED	Type	Term	Meth / bupe	Status	Number in database	Number in cohort	Dropped	% dropped	Median age (IQR)	% Male
G	x54560	xT800.00	Me	Accidental poisoning by heroin	-	Prob	-	-	-	-	-	-
G	x103842	x38G1.00	Me	Clinical opiate withdrawal scale	-	Prob	-	-	-	-	-	-
G	x30251	x13c1.00	Me	Intravenous drug user	-	Prob	1971	592	1379	70%	29.3 (23.3-36.7)	72%
G	x22059	xE240.13	Me	Morphine dependence	-	Def	250	198	52	21%	34.3 (26.4-47.3)	59%
G	x40536	xE255000	Me	Nondependent opioid abuse, unspecified	-	Def	<50	<50	<50	80%	28.2	50%
G	x30598	x8BA0.00	Me	Opiate dependence detoxification	-	Def	1642	1052	590	36%	32.8 (27.6-39.6)	68%
G	x32709	x13cJ.00	Me	Previously injecting drug user	-	Prob	761	223	538	71%	36.1 (30.6-41.9)	71%
G	x58560	xZRk7.00	Me	Severity of opiate dependence questionnaire	-	Prob	136	0-10	120-130	90%	32.9 (28.1-38.4)	76%
G	x97811	x1V38.00	Me	Sharing of drug injecting equipment	-	Prob	-	-	-	-	-	-
G	x60243	xZRk7.11	Me	SODQ - Severity of opiate dependence questionnaire	-	Prob	<50	<50	<50	30%	22.8	67%

3 Age- and sex-distribution of patients by product and clinical codes

We identified methadone and buprenorphine products (prescriptions) that are likely to be specific to OAT by examining the age- and sex-distribution of patients when they first received those prescriptions. The charts below show that prescriptions fell into two groups: those mainly prescribed to younger men, and those mainly prescribed to older women. We excluded the products mainly prescribed to older women as they are likely to be used for other indications. A prescribing professional reviewed the remaining products to check whether they are indicated for OAT. The charts showing the age- and sex-distribution of patients for each clinical code are also provided for completeness.

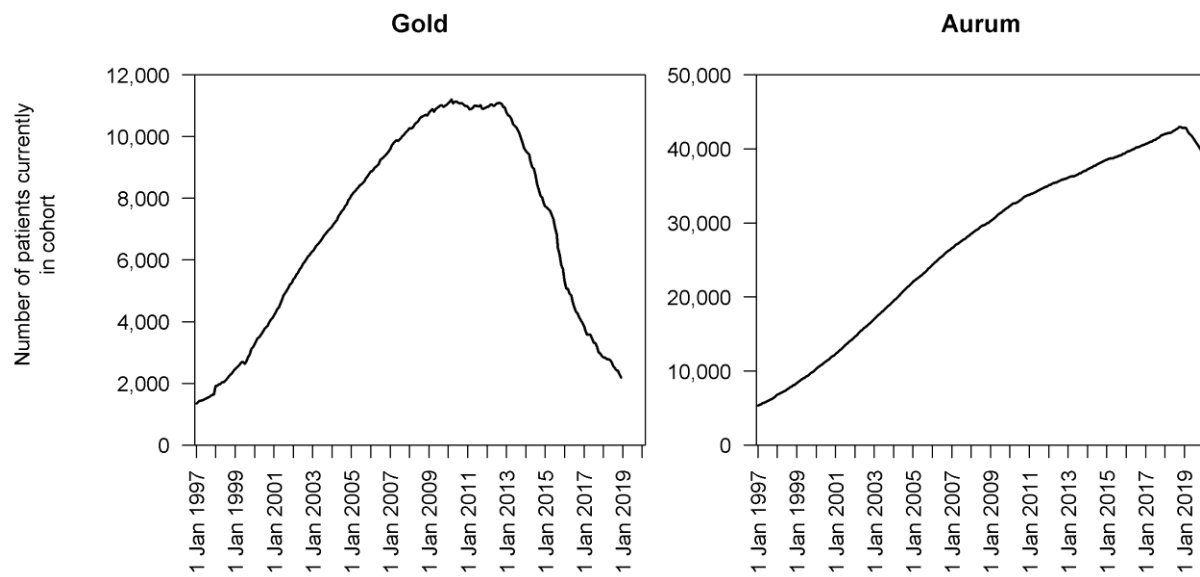
Figure: Age- and sex-distribution of patients at first record of product codes and clinical codes. Boxes show the 0.25, 0.5, and 0.75 quantiles of age. Whiskers show the minimum and maximum age.



4 Detailed table of mortality rates and ratios

Data-base	Sex	Age group	Sample size	Person-years	Observed deaths	Epected deaths	CMR (95% CI)	SMR (95% CI)
Gold	Female	18-29	3,565	10,154	31	3.1	3.1 (2.1-4.3)	10.0 (6.8-14.2)
		30-39	3,276	16,362	88	9.4	5.4 (4.3-6.6)	9.4 (7.5-11.5)
		40-49	1,628	11,444	123	15.3	10.7 (8.9-12.8)	8.0 (6.7-9.6)
		50-64	881	6,868	160	27.2	23.3 (19.8-27.2)	5.9 (5.0-6.9)
		65+	-	1,347	36	17.9	26.7 (18.7-37.0)	2.0 (1.4-2.8)
		All ages	9,350	46,174	438	72.9	9.5 (8.6-10.4)	6.0 (5.5-6.6)
	Male	18-29	7,020	20,666	120	16.0	5.8 (4.8-6.9)	7.5 (6.2-9.0)
		30-39	8,451	42,895	276	46.6	6.4 (5.7-7.2)	5.9 (5.2-6.7)
		40-49	4,238	28,725	333	60.3	11.6 (10.4-12.9)	5.5 (4.9-6.1)
		50-64	1,432	12,507	342	70.0	27.3 (24.5-30.4)	4.9 (4.4-5.4)
		65+	-	1,342	55	24.9	41.0 (30.9-53.3)	2.2 (1.7-2.9)
		All ages	21,141	106,136	1,126	217.9	10.6 (10.0-11.2)	5.2 (4.9-5.5)
	Both	18-29	10,585	30,820	151	19.1	4.9 (4.1-5.7)	7.9 (6.7-9.3)
		30-39	11,727	59,256	364	56.0	6.1 (5.5-6.8)	6.5 (5.8-7.2)
		40-49	5,866	40,169	456	75.6	11.4 (10.3-12.4)	6.0 (5.5-6.6)
		50-64	2,313	19,375	502	97.2	25.9 (23.7-28.3)	5.2 (4.7-5.6)
		65+	-	2,689	91	42.9	33.8 (27.2-41.5)	2.1 (1.7-2.6)
		All ages	30,491	152,309	1,564	290.8	10.3 (9.8-10.8)	5.4 (5.1-5.7)
Aurum	Female	18-29	10,645	30,113	99	9.1	3.3 (2.7-4.0)	10.9 (8.8-13.2)
		30-39	12,258	64,330	364	37.3	5.7 (5.1-6.3)	9.8 (8.8-10.8)
		40-49	6,765	53,709	612	71.4	11.4 (10.5-12.3)	8.6 (7.9-9.3)
		50-64	3,537	34,235	795	127.8	23.2 (21.6-24.9)	6.2 (5.8-6.7)
		65+	-	5,596	200	70.5	35.7 (31.0-41.0)	2.8 (2.5-3.3)
		All ages	33,205	187,982	2,070	316.1	11.0 (10.5-11.5)	6.5 (6.3-6.8)
	Male	18-29	19,799	58,602	334	44.5	5.7 (5.1-6.3)	7.5 (6.7-8.4)
		30-39	29,993	159,555	1,106	172.9	6.9 (6.5-7.4)	6.4 (6.0-6.8)
		40-49	18,190	140,079	1,718	296.4	12.3 (11.7-12.9)	5.8 (5.5-6.1)
		50-64	7,083	71,588	1,796	384.3	25.1 (23.9-26.3)	4.7 (4.5-4.9)
		65+	-	7,269	320	133.3	44.0 (39.3-49.1)	2.4 (2.1-2.7)
		All ages	75,065	437,093	5,274	1031.4	12.1 (11.7-12.4)	5.1 (5.0-5.3)
	Both	18-29	30,444	88,714	433	53.7	4.9 (4.4-5.4)	8.1 (7.3-8.9)
		30-39	42,251	223,884	1,470	210.1	6.6 (6.2-6.9)	7.0 (6.6-7.4)
		40-49	24,955	193,788	2,330	367.8	12.0 (11.5-12.5)	6.3 (6.1-6.6)
		50-64	10,620	105,823	2,591	512.1	24.5 (23.6-25.4)	5.1 (4.9-5.3)
		65+	-	12,866	520	203.8	40.4 (37.0-44.0)	2.6 (2.3-2.8)
		All ages	108,270	625,075	7,344	1347.6	11.7 (11.5-12.0)	5.4 (5.3-5.6)

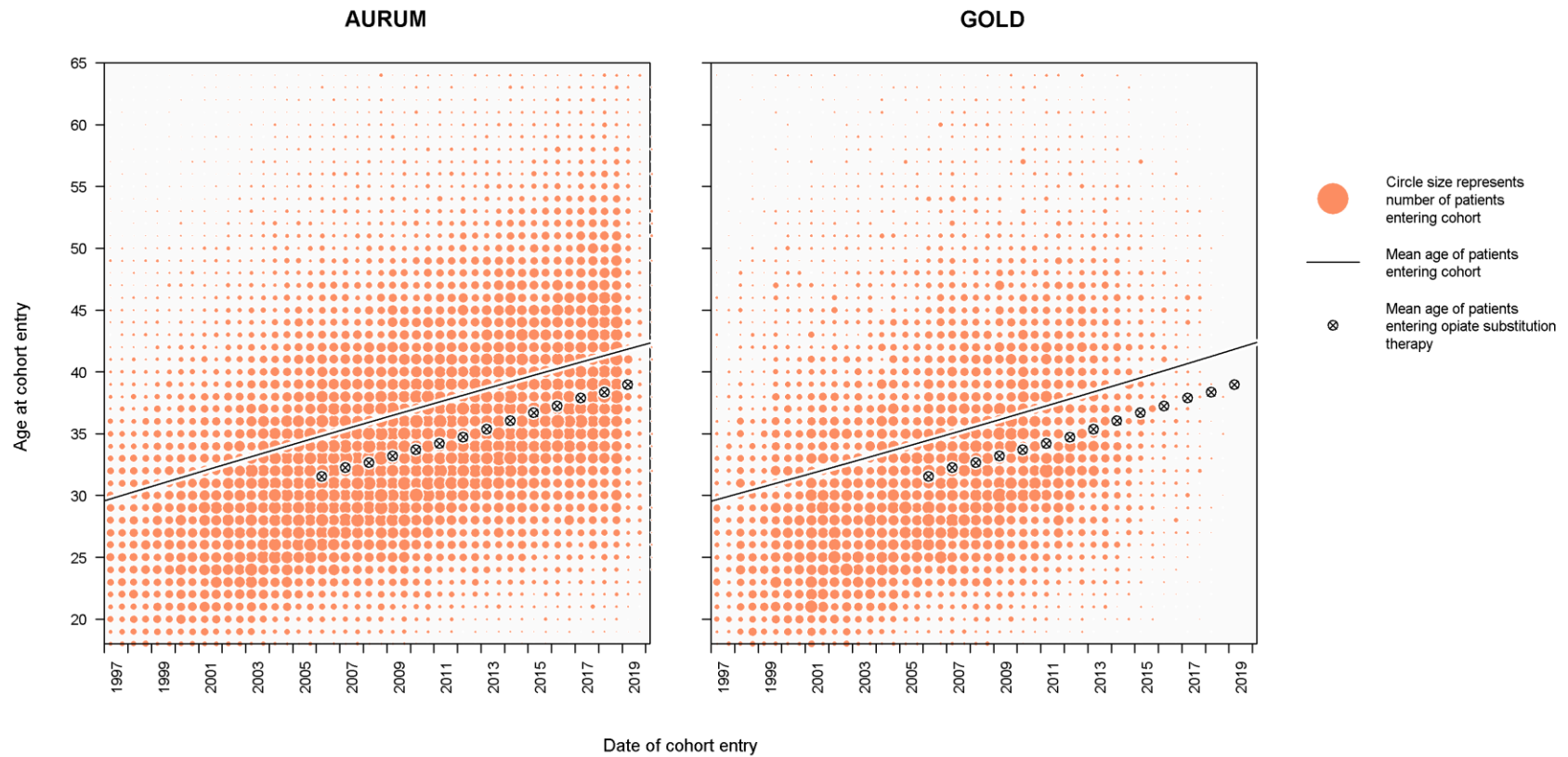
5 Number of patients currently in the cohort



6 Age of patients at cohort entry

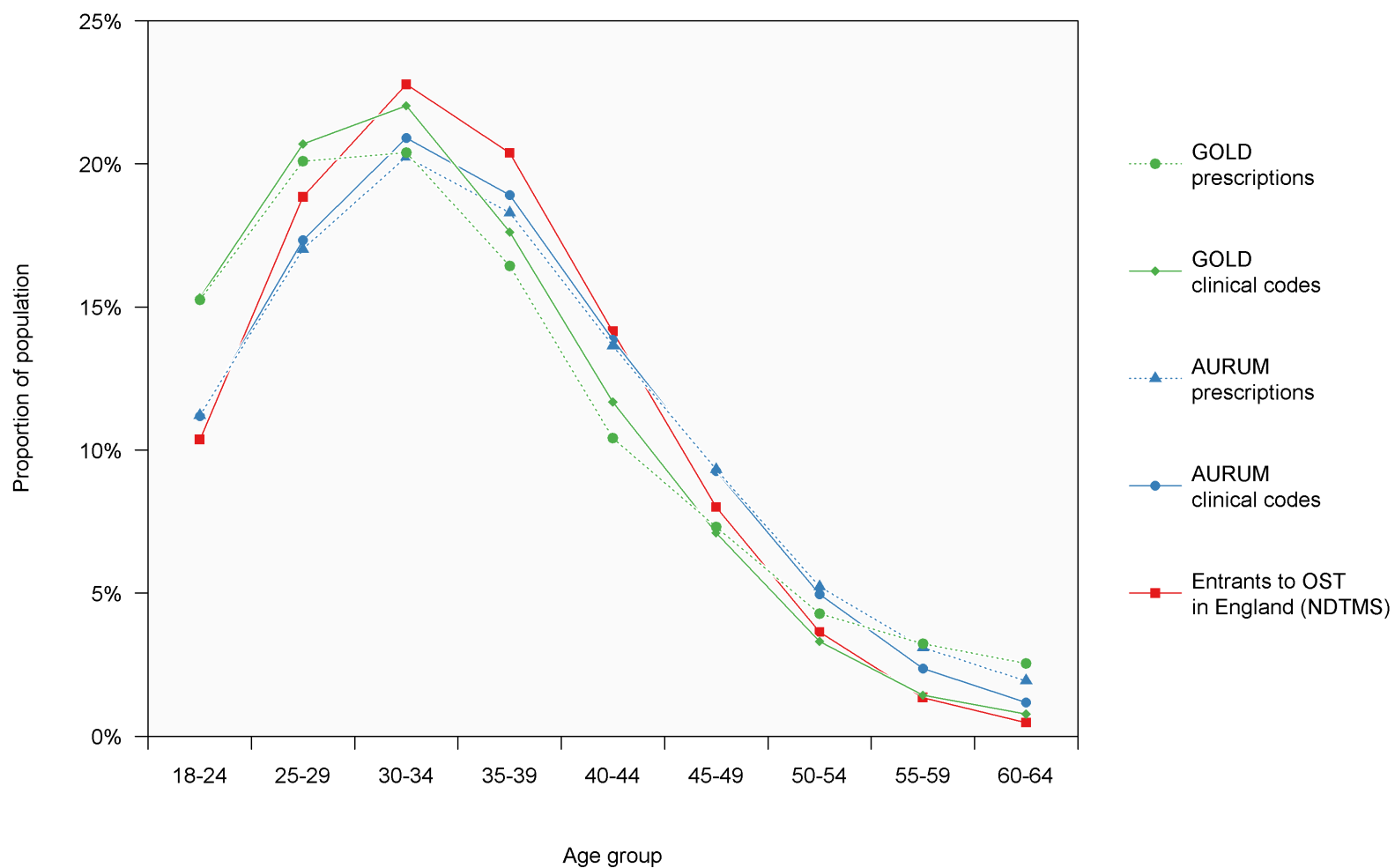
6.1 Age at cohort entry over time

Age of patients at cohort entry, compared to patients starting treatment for opiate dependence in England (NDTMS), by half-year



6.2 Age group at cohort entry

Age group of patients at cohort entry, compared to patients starting treatment for opiate dependence in England



7 Internal validation based on hospital admissions for opioid dependence

Hospital admissions related to opioid dependence, and the proportion of admitted patients who have primary care codes indicating illicit opioid use

		GOLD	AURUM
Patients with linkage to Hospital Episode Statistics		6.2 million	18.8 million
Number admitted with F11 in any diagnostic position after 1 Jan 1998		13,344	46,663
Of which: have a code in primary care data indicating illicit opioid use	Total with relevant code	11,905 (89%)	41,043 (88%)
	Before first admission	9,579 (72%)	31,325 (67%)
	30 days or less after first admission	299 (2%)	1,256 (3%)
	More than 30 days after first admission	2,027 (15%)	8,462 (18%)
	Not recorded	1,439 (11%)	5,620 (12%)

F11 is the ICD10 code "Mental and behavioural disorders due to use of opioids"